

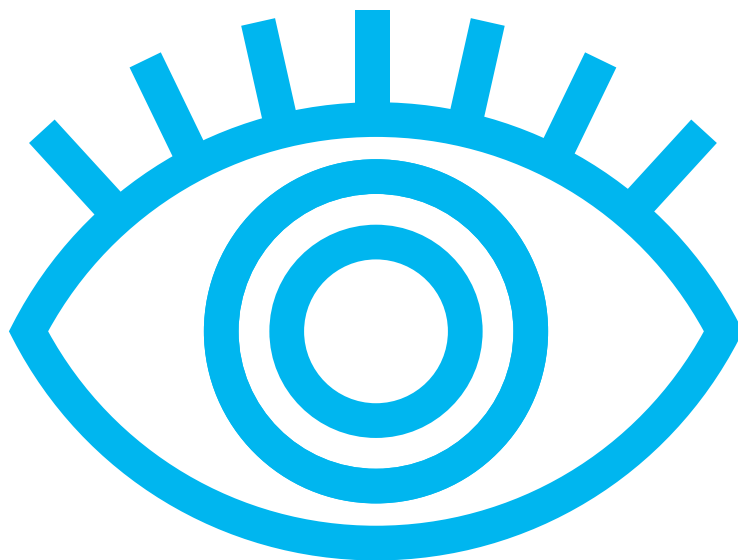
TWENTY QUESTIONS TO ASK ANY OBJECT

in the Anchorage Museum

Museum objects have important stories to tell. While objects may not have voices to tell us those stories, much may be learned from looking closely. The questions in this deck are designed to guide you in learning about an object from what you see. The deck can be used with any kind of object at the Anchorage Museum—a sculpture, a canoe, a photograph, a typewriter, a painting, a parka.

Begin by pulling any card or cards from the deck in any order. Look closely for details and information that might lead to a response. You may not find answers to each of the questions for every object. Sometimes the stories of objects are made up of more questions than answers.

While the questions in this deck are designed specifically for the Anchorage Museum collection, they can be used with any object to engage in close looking and creative, critical thinking. Use the deck by yourself or use with others to prompt conversation.



WHAT DO YOU NOTICE FIRST?



**WHAT SHAPES AND FORMS
DO YOU SEE?**



WHAT COLORS DO YOU NOTICE?



**HOW MIGHT THE OBJECT FEEL
IF YOU COULD TOUCH IT?**



**WHAT DOES THE
OBJECT SOUND LIKE?**



WHO MADE THIS OBJECT?



WHEN WAS THE OBJECT MADE?



**WHAT MATERIALS CAN BE
FOUND IN THIS OBJECT?**



**HOW MIGHT THIS
OBJECT BE USED?**



**HOW DOES LOOKING AT
AND THINKING ABOUT OBJECT
MAKE YOU FEEL?**



**WHAT WORDS WOULD YOU
USE TO DESCRIBE THE OBJECT?**



**HOW IS THIS OBJECT RELATED
TO ALASKA OR THE NORTH?**



DOES THIS OBJECT REMIND YOU OF AN OBJECT OR EXPERIENCE IN YOUR OWN LIFE?

Describe what experience or object you remember.



WHAT DO YOU THINK THE MAKER IS TRYING TO COMMUNICATE THROUGH THE CREATION OF THIS OBJECT?



**WHAT QUESTIONS DO YOU
HAVE ABOUT THE OBJECT?**



**WHAT QUESTIONS DO YOU
HAVE FOR THE MAKER?**



**WHY DO YOU THINK
THIS OBJECT IS IN THE
ANCHORAGE MUSEUM?**



**WHAT STORIES DOES
THIS OBJECT TELL?**



WHAT MORE CAN WE FIND?



WHAT DO YOU SEE?

