



ANCHORAGE
MUSEUM

W

E

L

C

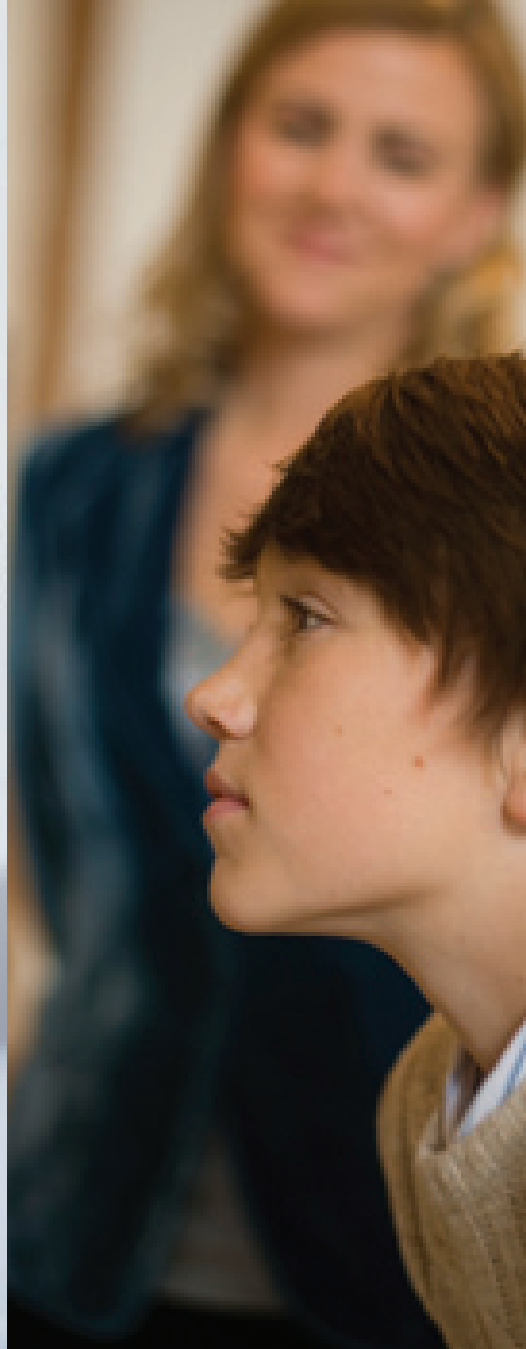
O

M

E



Lawrence Beck, *Poonk Timertik Inua (Punk Walrus Spirit)*, 1987,
steel, polyurethane paint, Anchorage Museum



The background of the left side of the page is a painting by Sydney Laurence titled 'Sunset on Snow (detail)'. It depicts a winter scene with snow-covered ground, bare trees, and a vibrant sunset sky in shades of orange, red, and yellow. The style is impressionistic with visible brushstrokes.

THANK YOU FOR BECOMING A MEMBER!

With your support, the Anchorage Museum shares and connects Alaska with the world through art, history and science.

Inside you will find information about your membership, galleries and exhibits, museum tours, amenities and contact information.

CONTACT



WWW.ANCHORAGEMUSEUM.ORG

RECORDED INFORMATION
(907) 929-9200

MUSE RESTAURANT
(907) 929-9210

GENERAL INFORMATION
(907) 929-9201

MUSEUM SHOP
(907) 929-9262

ANNUAL GIVING
(907) 929-9226

PLANNED GIVING
(907) 929-9225

FACILITY RENTAL
(907) 929-9261

VISITOR SERVICES
(907) 929-9263

MEMBERSHIP
(907) 929-9228

VOLUNTEER
(907) 929-9297

ADDITIONAL WAYS TO SUPPORT THE MUSEUM

YOUR BENEFITS

GIFT MEMBERSHIP

Share the Anchorage Museum with family and friends. Memberships are the perfect gift for birthdays, holidays and more. Visit www.anchagemuseum.org or call (907) 929-9228 for more information.

UPGRADE YOUR MEMBERSHIP

Explore the Anchorage Museum in depth through special programs, receptions with curators and invitations to exclusive events. For more information call (907) 929-9228.

ANNUAL GIVING

Your tax-deductible donation to the museum will support museum operations, including exhibits, educational programs and outreach programs that serve children, teachers and families throughout Alaska. For more information please call (907) 929-9226.

PLANNED GIVING

Making a planned gift through your will or estate plan can help you meet your financial goals and earn a tax deduction while helping to share and connect Alaska with the world—now and in the future. For more information please call (907) 929-9225.

EMPLOYEE MATCHING GIFTS

Many companies match their employees' gifts to nonprofit organizations. If your company has a matching gift program, your gift can be further leveraged to support the museum's mission. Please send completed matching gift forms to Anchorage Museum, Advancement Department, 625 C Street, Anchorage, AK 99501.

- Unlimited general admission for one year
- 10 percent discount at the museum shop and Muse restaurant
- Unlimited general admission to more than 300 science museums around the world through the Association of Science-Technology Centers Passport Program (www.astc.org)
- A subscription to our award-winning, bi-monthly newsletter *Anchorage Museum Today*
- Invitations to exclusive member appreciation back-of-house tours
- Discounts on art classes, lectures, birthday parties, camp programs and special programs
- Invitations to members-only exhibit previews and other special events
- Tax deduction (based on gift total and value of benefits)

LOCATION

Anchorage Museum at Rasmuson Center

625 C Street, Anchorage, Alaska 99501

Phone (907) 929-9200

Fax (907) 929-9290

MUSEUM HOURS

Mid-September through mid-May

Tuesday through Saturday from 10 a.m. to 6 p.m.

Sunday from noon to 6 p.m.

Closed Monday

Mid-May through mid-September

Every day from 9 a.m. to 6 p.m.

PARKING

There are many parking options near the museum. For more information visit www.anchagemuseum.org

DISABILITY ACCOMMODATIONS

Reserved parking and ramp entrance are located at the front of the museum. Wheelchairs are available upon request at the visitor services desk.

GALLERIES & EXHIBITS



ALASKA GALLERY provides a quintessential look into the state's history through cultural objects, artifacts, historic photography and life-size dioramas.



ART OF THE NORTH galleries feature landscapes, portraits and contemporary works reflecting Alaska and the circumpolar North.



ATWOOD ALASKA RESOURCE CENTER and the Paul G. Allen Family Foundation Reading Room invite people to browse more than 500,000 historic photographs and 10,000 publications.



BRIAN E. DAVIES GALLERY is a place for reflection where members can enjoy vistas of the Chugach Mountains and downtown.



IMAGINARIUM DISCOVERY CENTER offers people of all ages the chance to explore physics and the natural world. In the TOTE KidSpace everything can be touched and families can explore art, history and science through play.

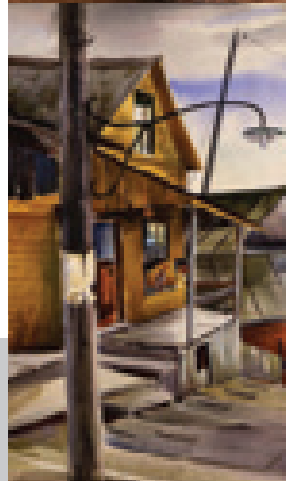
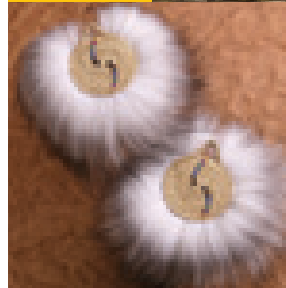
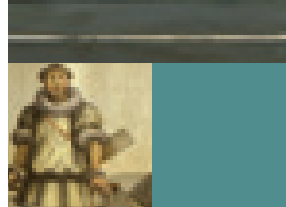
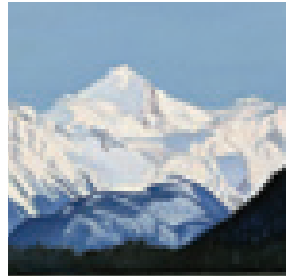


SMITHSONIAN ARCTIC STUDIES CENTER houses an exhibition of 600 rare Alaska Native heritage objects owned by the Smithsonian Institution.



THOMAS PLANETARIUM is a place where visitors will journey to the stars, taking trips through the solar system to explore the night sky.

AMENITIES



MUSEUM SHOP

A reader poll in the *Anchorage Daily News* called the museum shop one of the best retailers of Native arts and crafts. Members receive a 10 percent discount at the museum shop. The shop is open during regular museum hours.



MUSE RESTAURANT

Operated by The Marx Bros., Muse features imaginative, fresh cuisine in a lounge-like setting. Members receive a 10 percent discount at Muse. Hours vary seasonally. Visit www.anchagemuseum.org for hours and to make reservations.



EDUCATIONAL PROGRAMS AND CLASSES

Through a rich set of educational programs for children, adults and families, the Anchorage Museum inspires people to gather, engage their senses and exchange ideas. Visit www.anchagemuseum.org for current events.



FACILITY RENTAL

Located in the heart of downtown Anchorage, the museum provides a catered venue for more than 600 weddings, celebrations and corporate events each year. Call (907) 929-9261 for more information.