



ANCHORAGE MUSEUM TODAY



JANUARY/FEBRUARY 2012

ANCHORAGE MUSEUM ASSOCIATION

BOARD OF DIRECTORS

Gloria O'Neill, *Chair*
Steve Lindbeck, *Vice Chair*
Karen Compton, *Secretary*
Susan Knowles, *Treasurer*
Todd Bell
Brian E. Davies
Barbara Donatelli
Laura Emerson
Jan Ingram
Bernadine Nyboer
Evan Rose
Curtis Smith

ADMISSION

Free to museum members
\$12 adult
\$9 senior/student/military
\$7 ages 3 to 12
Free ages 2 and younger

MUSEUM MEMBERSHIPS

(907) 929-9228
or at the museum shop

VOLUNTEER

(907) 929-9297

EVENT RENTAL

(907) 929-9261

ATWOOD RESOURCE CENTER

(907) 929-9235

PARKING

Public parking in underground garage on weekends and evenings, with handicap parking during all regular museum hours

ANCHORAGE MUSEUM

AT RASMUSON CENTER

625 C Street
Anchorage, Alaska 99501
(907) 929-9200 tel
(907) 929-9290 fax
www.anchoragemuseum.org

ANCHORAGE MUSEUM TODAY

January/February ©2012
Anchorage Museum Association
Editor: Sarah Henning

The Anchorage Museum at Rasmuson Center is owned by the Municipality of Anchorage and operated under contract by the Anchorage Museum Association, a nonprofit 501(c)(3) organization.

The museum is accredited by the American Association of Museums and is supported in part by annual contributions from the Anchorage Museum Association, the Anchorage Museum Foundation, the Municipality of Anchorage and private, corporate and foundation funds.

IMAGE CREDITS

Cover
Preston Singletary, *Raven Steals the Sun*, blown, hot-sculpted and sandcarved glass, 2001, courtesy Michael and Cathy Casteel

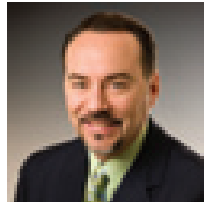
p.3 (clockwise)

Preston Singletary, Russell Johnson; George Browne, untitled, oil on canvas, 1947; boy and family, iStockphoto.com; Tim Remick, #1. *After 55 years: 20,320 feet: 11 days*, high-density resin coated pigment print, 2010; Black History Month, Chris Arend Photography; Preston Singletary, Ed Archie and NoiseCat, *Frog Mask*, mold-blown and sandcarved glass, 1999, courtesy Raven and Robert Fox

Back page

Preston Singletary, *Warrior Mask*, mold-blown and sandcarved glass with horsehair, 2001, courtesy Larry Gabriel; Tim Remick, #25. *After 43 years: 20,320 feet: 12 days*, high-density resin coated pigment print, 2010; Carl Battreall, *Emerging Leaves*, pigment ink print, 2009

letter from the director



OUR MISSION TO SHARE and connect Alaska with the world through art, human and natural history, and science is particularly

relevant during these times of pervasive social and environmental change. Cultural attractions appeal to visitors seeking to interpret what is happening in their own lives within a global context.

The North is a very unique place, and so are the lifeways of its people. As an institution of the North, the Anchorage Museum explores "place" through a variety of exhibitions and programs including the Alaska History Gallery, Art of the North galleries, Smithsonian Arctic Studies Center and even the museum shop.

The North's art and architecture have evolved simultaneously, from the rich traditions of Native peoples to the contemporary works of its diverse population. This May we present

True North, an exhibition examining contemporary northern cultural identity, landscape, isolation, urbanity, migration and environmental change. The result is an unvarnished look at life in the North as revealed by artists from Alaska, Russia, Canada and Scandinavia. You'll hear more about this unique exhibition in future issues of *Anchorage Museum Today*.

Until then, visit us often and explore Alaska's majestic landscape through the work of artist-adventurer George Browne, who dared to capture Mt. McKinley on canvas during a remarkable ascent in 1947. And be amazed by the powerful interpretations of Tlingit legends revealed in Preston Singletary's stunning glass sculptures. Alaska and the North are truly magnificent and inspirational.

James Pepper Henry DIRECTOR AND CEO

NEWS AND NOTES

ANCHORAGE MUSEUM SUMMER CAMPS ACCREDITED

THE ANCHORAGE MUSEUM'S Imaginarium Explorer Camps have earned accreditation from the American Camp Association (ACA). Accreditation is independent and voluntary, giving parents the best evidence the museum's camps offer an educational, safe, and nurturing environment for children ages 6 to 12.

The museum offers weeklong, full-day camps in June and July appealing to a wide array of interests including

robotics, archaeology and painting. The ACA evaluated the museum's camps on more than 300 health and safety standards, including staff qualifications, program design and emergency management.

Registration begins April 2 for summer camps. Starting in March, find camp descriptions and registration information at anchoragemuseum.org/camp.

ACCESS MORE THAN 10,000 MUSEUM IMAGES ONLINE

NEARLY 4,000 OF the Anchorage Museum's historical images were added recently to Alaska's Digital Archives. Now researchers can find more than 10,000 of the museum's images online at <http://vilda.alaska.edu>.

These newly scanned images come from the Steve McCutcheon Collection (Alaska Native people, statehood, politics and villages), Sidney Hamilton Collection (roadhouses, train depots,

and Southcentral Alaska scenery) and Redington Family Collection (Iditarod Trail Sled Dog Race).

This project was funded in part by the Institute of Museum and Library Services through the Library Services and Technology Act administered by the Alaska State Library, Alaska Community Foundation Anchorage Statehood Project, and Rasmuson Foundation.



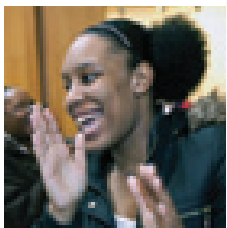
table of contents



- 4** **ECHOES, FIRE, SHADOWS**
Singletary exhibit melds glass, Tlingit heritage



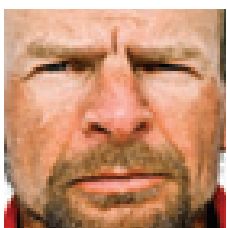
- 10** **ART OF ALTITUDE**
Painter fulfilled father's dreams



- 6** **WHAT'S NEXT**
Upcoming programs and events, including a Black History Month celebration



- 10** **PICK.CLICK.GIVE.**
Donating to a nonprofit was never so easy



- 8** **ADRENALIN RUSH**
Remick photographs McKinley climbers



- 11** **MUSEUMS ON US**
Free days for Bank of America cardholders

PRESTON SINGLETARY: ECHOES, FIRE AND SHADOWS

On view Feb. 3 through April 22

FOR MORE THAN 20 YEARS, Preston Singletary has melded the legends of his Tlingit heritage with the beauty of glass to create a distinctive, powerful body of work.

Preston Singletary: Echoes, Fire and Shadows, on view Feb. 3 through April 22, is a mid-career survey chronicling Singletary's evolution from night watchman at a glass studio to internationally recognized glass artist. The exhibition was curated by the Museum of Glass in Tacoma, Wash., and traveled last year to the National Museum of the American Indian's gallery in New York City.

Singletary, who lives in Seattle, was raised with stories about his Tlingit heritage from his great-grandmother, Susie Johnson Bartlett, and other relatives from Southeast Alaska. Inspired by this legacy, he dedicated his work to both honoring Tlingit tradition and infusing it with new vitality.

He sees the Alaska exhibition as a homecoming. "I am honored to have all this national attention for my work, but my connection to the Native community and the indigenous world community is where I get my inspiration," he said. "I have a tremendous sense of purpose with my work because it represents my family, history, community and the confluence of cultures as I experience it."

His unique interpretations of Tlingit legends are visible in his stunning glass sculptures, many of which are in traditional forms such as crest hats, masks and rattles. He employs a complex combination of techniques, including glassblowing, sand carving and inlaying.

In this exhibition, visitors will see nearly 50 works of art, including some rare objects being exhibited for the first time and Singletary's most ambitious work to date: *Clan House*, a 16-by-10-foot glass triptych recalling the interior of a Tlingit longhouse. The exhibition is enriched by original music and a documentary film.

Some objects on display are from the artist's own collection; others were borrowed from museum and private collections across the United States. Singletary's art is included in collections at the Seattle Art Museum; Museum of Fine Arts, Boston; Anchorage Museum; and the Heard Museum, Phoenix, among others.

This exhibition was organized by the Museum of Glass, Tacoma, Wash., presented by Alaska Airlines and sponsored by the Leonard and Norma Klorfine Foundation, Windgate Charitable Foundation and JoAnn McGrath. Support for the exhibition at the Anchorage Museum comes from Alaska Airlines, ConocoPhillips Alaska and the Gottstein Family Foundation.



WINDOW ON GLASS

Meet Preston Singletary and learn more about his work at these upcoming events:

SMITHSONIAN SPOTLIGHT

Noon Thursday, Feb. 2 Included with admission
Singletary discusses how his Tlingit heritage influences his art. This is a rare opportunity to see the Smithsonian's Tlingit artifacts out of the cases.

ARTIST TALK

7 p.m. Friday, Feb. 3 Free
Hear Singletary talk about his inspirations, methods and artwork.

ARTIST ON THE FLOOR

1 to 3 p.m. Saturday, Feb. 4 Included with admission
Ever see an exhibition and wish you could talk to the artist about it? Here's your chance.

SATURDAY WITH SINGLETARY

2 to 4 p.m. Saturday, Feb. 4
Included with admission
A family friendly way to learn about glass art. Use the interactive family guide to tour the exhibition, then enjoy hands-on activities.

THE EXCHANGE

TRANSCENDING THOUGHTS

3:30 to 5 p.m. Saturday, Feb. 4

Included with admission

Join Singletary and Tlingit storyteller Walter Porter for an informal conversation. Learn how they found strength and inspiration in family and culture.

MOSAIC WORKSHOP

10 to 4 p.m. Saturday, Feb 11 and

Noon to 2 p.m. Sunday, Feb 12

\$90 member/\$110 non-member

Design and create a mosaic. Get inspired by the Singletary exhibition, and learn about mosaic-making techniques and tools.

TEEN INVASION: SHATTERED

6:30 to 9:30 p.m. Saturday, Feb 18 Free

Teens can hang out, make art, listen to live music and check out the Singletary exhibition.

EXHIBITION CATALOG

This beautiful catalog is available for purchase in the museum shop. The catalog includes lush photographs of every artwork in the exhibition, as well as a DVD containing a Preston Singletary documentary.



IMAGE CREDITS (clockwise) Preston Singletary: *Transference*, blown and sandcarved glass, 2002, courtesy Luino and Margaret Dell'Osso, Jr.; *Box Drum Design*, fused, slumped and water jet cut glass, 2007, courtesy the artist; *Raven Steals the Sun*, blown, hot-sculpted and sandcarved glass, courtesy Museum of Glass



JANUARY/FEBRUARY



CLARK PLANETARIUM



CHRIS AREND PHOTOGRAPHY

THOMAS PLANETARIUM

LED ZEPPELIN COSMIC LIGHT SHOW

8 p.m. First Fridays

4 p.m. Saturdays

\$22 general/\$10 member

(includes museum general admission)

Be transported by mood-provoking abstract art, theme-based imagery and transportive effects choreographed to some of Led Zeppelin's biggest hits, including *Whole Lotta Love*, *Immigrant Song* and *Ramble On*. Audience advisory: Adult subject matter.

FAMILY EVENT

MEET THE WORLD

11 to 4 p.m. Saturday, Feb. 25 Free

Experience the unique cultures of Anchorage's melting pot when Bridge Builders hosts its annual cultural festival. Learn about different groups' traditions through dance performances featuring Nkauj Hmong Alaska Golden Star, Las Nustas in Alaska, and the Korean Cultural Center of Anchorage. Explore 30 cultures from around the world with a collectible passport and create globally minded art.

EVENTS

HOLIDAY CLOSURE



Sunday, Jan. 1

The museum is closed for New Year's Day.

SHOP INVENTORY



Sunday, Jan. 1

through Thursday, Jan. 5

The museum shop is closed for inventory.

FIRST FRIDAY



6 to 9 p.m. Jan. 6 Free

Enjoy the museum's galleries, planetarium shows and live jazz by Melissa Bledsoe Fischer.

ELEVATOR MUSIC

THE CARHARTT BROTHERS



6 to 9 p.m.

Friday, Jan. 6 Free

We're redefining elevator music: What was once bland, recorded background noise is now an upbeat, live concert experience. Board the museum's oversize elevator and enjoy The Carhartt Brothers' old-timey sounds and Alaska charm.

ARTIST TALK

MICHAEL CONTI



7 p.m. Friday, Jan. 6 Free

Anchorage artist

Michael Conti discusses

his photographic journey, particularly his character-based approach to visual storytelling.

HOBBY DAY



2 to 4 p.m.

Sunday, Jan. 8 Free

Connect with others

who share your hobby, and discover potential new pastimes. Meet collectors and see their prized possessions, try making jewelry, learn to play the ancient Asian game Go, and more. Admission is free all day thanks to Wells Fargo.

CURATOR'S TOUR



Noon Friday

Jan. 20 and Feb. 17

Included with admission

Join anthropologist Aron Crowell for a tour of the Smithsonian Arctic Studies Center's Alaska Native artifacts.

SMITHSONIAN SPOTLIGHT

PRESTON SINGLETARY



Noon Thursday, Feb. 2

Included with admission

Join renowned glass

artist Preston Singletary for a brown-bag lunch where he'll discuss how his Tlingit heritage has influenced his work. Enjoy this rare opportunity to see Tlingit artifacts taken out of the Smithsonian Arctic Studies Center cases.

FIRST FRIDAY



6 to 9 p.m. Feb. 3 Free

Enjoy the opening of two exhibits, artist talks, planetarium shows and live music by Rebel Blues.

ARTIST TALK

PRESTON SINGLETARY



7 p.m. Friday, Feb. 3 Free

Preston Singletary has spent two decades translating Tlingit legends and designs into glass. Learn about the inspirations, methods and artwork in his new exhibit.

ARTIST TALK

TIM REMICK



8 p.m. Friday, Feb. 3 Free

Anchorage artist Tim

Remick used large-

format photography to capture emotionally and physically ravaged Mt. McKinley climbers as they returned to base camp. In this talk about his new solo exhibit he discusses what this project taught him about mortality and the human spirit.

ARTIST ON THE FLOOR



PRESTON SINGLETARY

1 to 3 p.m.

Saturday, Feb. 4

Included with admission

Ever see an exhibit and wish you could talk to the artist about it? Here's your chance. Preston Singletary waits in the *Echoes, Fire and Shadows* exhibit to answer your questions.

Find more information on these and other programs at anchoragemuseum.org.

JANUARY 2012



SMITHSONIAN SPOTLIGHT

FACES OF ALASKA

7 p.m. Thursday, Jan. 5 Included with admission

A talk by Anchorage photographer Brian Adams, whose work has been featured in publications including The New York Times, Time and The Guardian. Adams specializes in environmental portraiture and medium-format photography. He discusses his work documenting Alaska Native villages and a new book project.


FAMILY EVENT

BLACK HISTORY FAMILY DAY

2 to 4 p.m. Sunday, Feb. 12 Free


Commemorate Black History Month with rich cultural activities, including a gospel performance by The Greater Friendship Baptist Church Choir. Learn about expressions of love in African American culture. Using traditional African designs, make a Valentine's Day card, quilt a fabric square or bead a bracelet. Admission is free all day thanks to Wells Fargo.

SATURDAY WITH SINGLETARY

 2 to 4 p.m.
Saturday, Feb. 4
Included with admission


A family friendly opportunity to learn about Preston Singletary's glass sculptures. Use the interactive family guide to tour the *Echoes, Fire and Shadows* exhibit, then enjoy related hands-on activities for children.

THE EXCHANGE TRANSCENDING THOUGHTS

 3:30 to 5 p.m.
Saturday, Feb. 4
Included with admission


Join Tlingit storyteller Walter Porter and Tlingit artist Preston Singletary for a conversation about their unique creative perspectives. Learn how they found strength and inspiration in family, society and cultural roots. A book signing follows.

VALENTINE'S DINNER

 6 to 9 p.m.
Tuesday, Feb. 14
\$70 per person/
\$100 with wine pairings


Savor a delectable, romantic dinner at Muse with a four-course, *prix fixe* menu. Reservations are required at (907) 929-9210.

TEEN INVASION: SHATTERED

 6:30 to 9:30 p.m.
Saturday, Feb 18 Free

Teens can hang out, listen to live music and check out the Preston Singletary exhibit. Through cool projects they'll learn about the science, art and culture of glass.

CHRISTEL VERAART: INNER LANDSCAPES

 7 p.m.
Saturday, Feb. 18 Free
Christel Veraart

releases her *Inner Landscapes* CD with a meditative art performance that combines sound, images and poetry.

CLASSES

CLOSE-UP PHOTOGRAPHY

6:30 to 8:30 p.m.
Mondays, Jan. 30-Feb. 20
\$130 member/\$150 non-member
Basic macro photography.
Instructor: Carl Battreall.

DRAWING: INSPIRATION AND INVENTION

6:30 to 8:30 p.m.
Wednesdays, Feb. 1-Mar. 7
\$170 member/\$190 non-member
Learn to sketch using a wide array of tools and media. Instructor: Keren Lowell.

MOSAIC WORKSHOP

10 to 4 p.m.
Saturday, Feb 11 and 12 to 2 p.m.
Sunday, Feb 12
\$90 member/\$110 non-member
Create your own mosaic.
Instructor: Michelle Turk.

A CLOSER LOOK AT SYDNEY LAURENCE

6 to 8 p.m. Friday, Feb. 17 and
11 to 5 p.m. Saturday, Feb. 18
\$120 member/\$140 non-member
Dig deep into the life and work of Alaska's most beloved artist.
Instructor: Kesler Woodward.

PLANETARIUM

Schedule valid through April 30.
Prices vary from \$4 to \$10
(\$2 member discount). Buy tickets
at anchoragemuseum.org.

GUIDED STAR SHOW

6:10 p.m. First Fridays
3 p.m. Saturdays and Sundays

DARK SIDE OF THE MOON

7 p.m. First Fridays

EARTH, MOON AND SUN

12:30 p.m. Saturdays and Sundays

NEW HORIZONS

1:15 p.m. Saturdays and Sundays

WONDERS OF THE UNIVERSE

2 p.m. Saturdays and Sundays

PARTNER PROGRAMS

COOK INLET HISTORICAL SOCIETY
Ward Wells Historical Photographs
7:30 p.m. Thursday, Feb. 16 Free
Artist Duke Russell talks
about prolific commercial
photographer Ward Wells.

Events are subject to change.
During free events, fees still
apply for planetarium shows.

AFTER: PORTRAITS FROM DENALI

ARTIST TALK: TIM REMICK

8 p.m. Friday, Feb. 3
Free

Tim Remick talks about his new solo exhibition, discussing what this project taught him about photography, mortality and the human spirit.



Tim Remick Solo Exhibition

On view Feb. 3 through April 15

FOR HIS SOLO EXHIBITION, Tim Remick photographed emotionally and physically ravaged mountain climbers. He captured them mere moments after they stumbled into Mt. McKinley's base camp, still raw from the grueling experience.

The large-format portraits are nearly 5 feet tall, heightening the drama of every hard-won blister and wrinkle, every haunted eye and guarded grimace.

"I really wanted to have a single frame at the end of the experience that caught the exhaustion, the adrenaline, the emotion," said the Anchorage artist. "The goal was to summarize the whole climb with a single image."

A climber himself, Remick's own 2002 McKinley summit attempt was thwarted by stormy weather. But knowing the mountain firsthand, he knew the moment he wanted to capture would be lost by the time the climbers flew to Talkeetna. So he set up at base camp with a large format 4x5 camera for several weeks during the 2008 and 2010 climbing seasons.

The resulting 20 photographs in *AFTER: Portraits from Denali* offer startling physical evidence of the journey's toll. Through these images Remick reflects on the passage of time and mortality, while also celebrating the human capacity to endure.

"The photos are direct, detailed and instantly descriptive, providing a compelling narrative for a place and an activity that few experience," said Chief Curator Julie Decker.

A former middle school science teacher, Remick earned a master's degree in photography from Savannah (Ga.) College of Art and Design in 2009. He is an adjunct photography professor at the University of Alaska Anchorage and Alaska Pacific University.

This exhibition is presented as part of the Patricia B. Wolf Solo Exhibition Series. The Anchorage Museum is grateful to the Alaska State Council on the Arts; the National Endowment for the Arts, a federal agency; the Municipality of Anchorage; and the Anchorage Museum Foundation's Alaska Airlines Silver Anniversary Fund for ongoing support of the museum's important solo exhibition series.

IMAGE CREDITS (clockwise) Tim Remick: #12. After 54 years: 20,320 feet: 14 days; #25. After 43 years: 20,320 feet: 12 days; #1. After 55 years: 20,320 feet: 11 days; #13. After 34 years: 20,320 feet: 17 days; #7. After 32 years: 20,320 feet: 15 days, all high-density resin-coated pigment prints, 2010







George Brown, untitled, oil on canvas, 1947

GEORGE BROWNE: ART OF ALTITUDE

On view Feb. 3 through May 1

MT. MCKINLEY HAS BEEN painted innumerable times, but nobody tackled the scenery quite like George Browne (1918-1958). Undaunted by blindness in one eye, the outdoors enthusiast not only conquered the tallest mountain in North America, he created 23 oil paintings during the climb. These paintings are on view in the *George Browne: Art of Altitude* exhibition Feb. 3 through May 1.

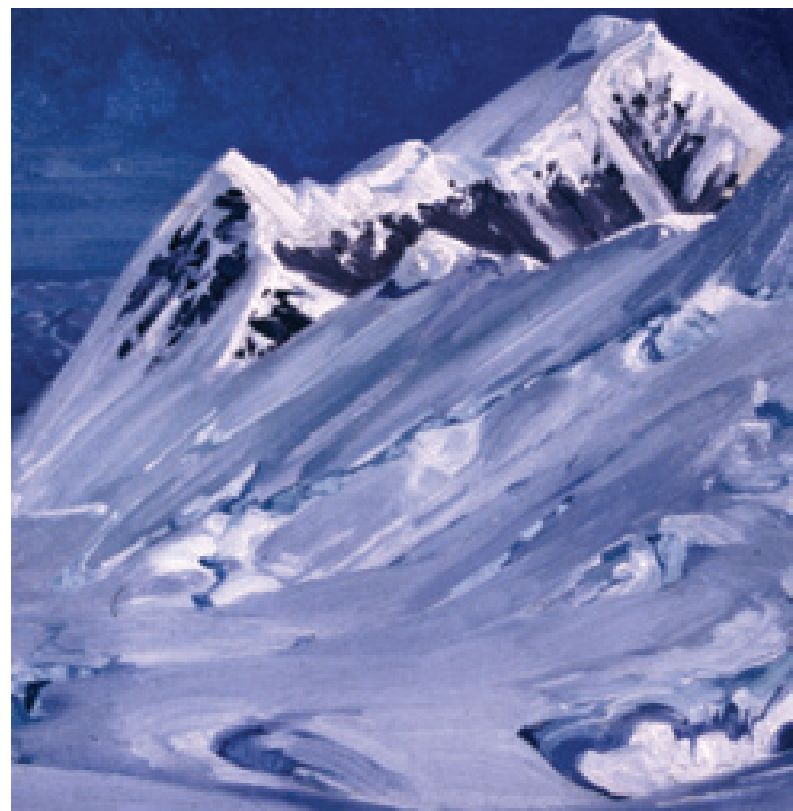
In 1947 Browne reached the 20,320-foot summit as part of a Bradford Washburn-led scientific expedition. It was the fulfillment of a family goal that stretched back to his father Belmore's unsuccessful attempts some 35 years earlier.

Most artists in the younger Browne's place would have chosen to sketch in pencil, waiting to paint until they returned to solid ground. Not Browne. In addition to his climbing gear and food, he carried canvases, brushes, paint and an easel. As the group ascended the mountain, he painted during periods of good weather.

He carried the painted canvases in a plywood box designed so the wet paintings wouldn't smear in transit. Some of Browne's Mt. McKinley paintings have patches missing; others remain unfinished because snowstorms

obscured his view. Mother Nature thwarted him completely at 11,000 feet, when temperatures reached 20-below zero and his paint froze.

Browne died in a hunting accident in 1958 before he could touch up his Mt. McKinley paintings. They were never exhibited during his lifetime.



George Brown, untitled, oil on canvas, 1947

BANK OF AMERICA OFFERS CUSTOMERS FREE MUSEUM ADMISSION

STARTING FEB. 4 the Anchorage Museum will be a member of Bank of America's nationwide Museums On Us program. Through this program, Bank of America and Merrill Lynch cardholders will enjoy free museum general admission on the first Saturday of every month.

The Anchorage Museum is the first Alaska museum selected by Bank of America for Museums On Us. The program brings new audiences and attention to participating organizations, which range from some of

the nation's most celebrated museums to regional gems, and include art, science and history museums, as well as zoos and aquariums.

Visitors must show their credit or debit card along with photo ID at the front desk upon arrival to receive free admission.

Bank of America cardholders will also receive a 10 percent discount on purchases at the museum shop on these days. (No other discounts apply.)

MEMBERSHIP DEAL

Renew early and get one month free

As a special thank you to our valued members, the Anchorage Museum is offering a free gift with membership renewal. Renew your membership before the expiration date, and the museum will give you one additional month of membership free.

That's one more month you can bring the family to the Imaginarium Discovery Center, explore touring exhibitions, enjoy member discounts at Muse and the museum shop, and more! This is a limited time offer.

For more information, email membership@anchagemuseum.org

PICK.CLICK.GIVE.

Don't miss a great way to support the Anchorage Museum when applying for the Alaska Permanent Fund Dividend. Save these dates:

- JAN. 1: Online filing for PFD and Pick.Click.Give. begins.
- MARCH 30: The last day to file for your PFD.
- TODAY: The perfect time to improve our community.

When you go online to sign up for your dividend, just follow the easy "Pick.Click.Give" instructions to make a gift. Please provide your contact information so we can acknowledge your generous support.

Find more information at www.pickclickgive.org or (888) 785-4438.

MADMUSEUM thanks

THE ANCHORAGE MUSEUM THANKS the following supporters of the sold-out Mad Museum fundraiser on Oct. 21. Their support helps the museum stimulate curiosity and inspire learning by funding educational programs that serve more than 50,000 people annually.

Alaska Distillery

ConocoPhillips Alaska

Linden

The Wilson Agency LLC

Princess Cruises
Community Foundation

Scan Home

Anchorage Press

KOOL 97.3

Mix 103.1

Alaska Pension Services

Alaska Dance Promotions

Alaska Aces

Alaska Vein Center of Anchorage

Allure Day Spa and Hair Design

Alyeska Resort

Bosco's

Circular

Moose's Tooth and Bear Tooth

Party World

Pete's Tobacco Shop

Shear Fire Design

VivaVoom Brr-lesque



HOURS

MUSEUM

Winter
10 a.m. to 6 p.m.
Tuesday through Saturday
Noon to 6 p.m. Sunday
Closed Monday
Closed New Year's Day

SHOP

Open during museum hours

MUSE

11 a.m. to 3 p.m.
Tuesday through Saturday
4 p.m. to 9 p.m.
Thursday through Saturday
Noon to 4 p.m. Sunday
Closed Monday

ATRIUM SNACK BAR

9 a.m. to 5 p.m.
Tuesday through Friday
10 a.m. to 5 p.m. Saturday
Noon to 5 p.m. Sunday
Closed Monday

ADMISSION

Free to museum members
\$12 adults
\$9 senior/student/military
\$7 ages 3 to 12
Free ages 2 and younger

FOLLOW US ON

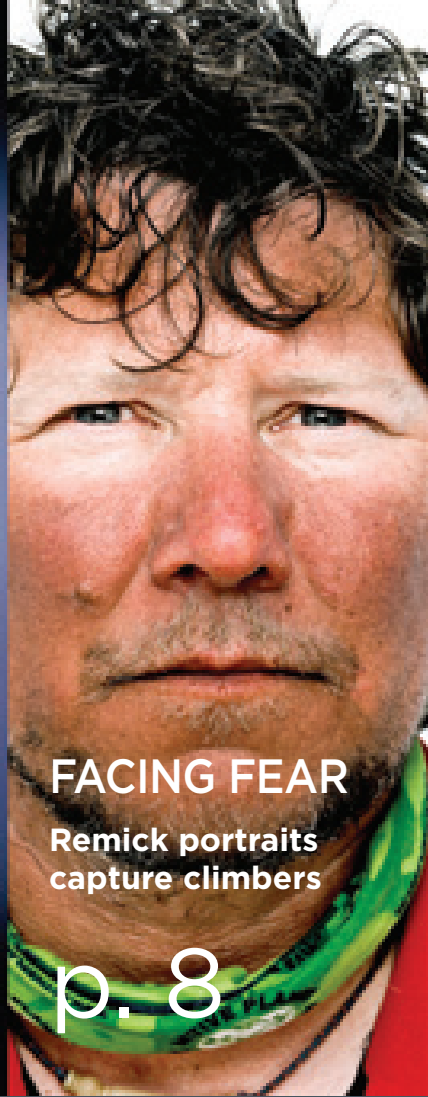
[facebook](#) [twitter](#)



GLASS MASTER

Singleary's stunning
mid-career survey

p. 4



FACING FEAR

Remick portraits
capture climbers

p. 8



NEW CLASSES

Ignite your
creative spark

p. 7

JANUARY/FEBRUARY NEWSLETTER 2012 www.anchoragemuseum.org

NONPROFIT ORG.
U.S. POSTAGE
PAID
PERMIT NO. 84
ANCHORAGE, AK

ANCHORAGE
MUSEUM

ANCHORAGE MUSEUM AT RASMUSON CENTER
625 C Street, Anchorage, AK 99501

Pick.
Click.
Give.

GIVING HAS NEVER BEEN SO EASY!
LEARN MORE AT PICKCLICKGIVE.ORG