

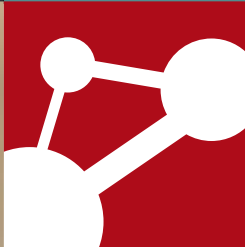
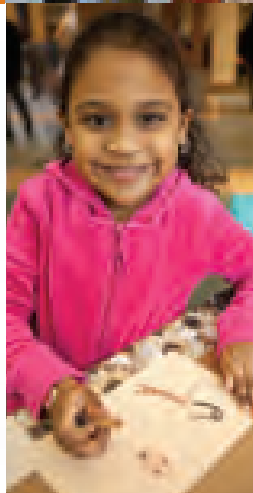


**ANCHORAGE
MUSEUM**

www.anchagemuseum.org



2011-2012 EDUCATOR CATALOG



EDUCATOR CATALOG 2011-12

ANCHORAGE MUSEUM ASSOCIATION BOARD OF DIRECTORS

Gloria O'Neill, *Chair*
 Steve Lindbeck, *Vice Chair*
 Karen Compton, *Secretary*
 Susan Knowles, *Treasurer*
 Todd Bell
 Brian E. Davies
 Barbara Donatelli
 Laura Emerson
 Jan Ingram
 Warwick King
 Bernadine Nyboer
 Evan Rose
 Curtis Smith

CONTACT US

FIELD TRIP REGISTRATION

Anchorage School District (ASD)
 educators: (907) 742-4148

Non-ASD educators: (907) 929-9280

For more information about non-ASD
 field trip registration, e-mail
 fieldtrips@anchagemuseum.org.

To speak with an education specialist
 about curriculum, please call:

Earth and space sciences
 (including planetarium) (907) 929-9276

Science outreach (907) 929-9279

Interdisciplinary museum studies
 (907) 929-9269

History and social studies
 (907) 929-9270

Teacher professional development
 (907) 929-9271

All other education inquiries
 (907) 929-9280

ANCHORAGE MUSEUM AT RASMUSON CENTER

625 C St.
 Anchorage, AK 99501
 (907) 929-9200 phone
 (907) 929-9290 fax
 www.anchagemuseum.org

Anchorage Museum
 Educator Catalog 2011-12
 © August 2011

Anchorage Museum Association

Editors: Katie Kelley and Sarah Henning

The Anchorage Museum at Rasmuson Center is owned by the Municipality of Anchorage and operated under contract by the Anchorage Museum Association, a nonprofit 501(c)(3) organization. The museum is accredited by the American Association of Museums and is supported in part by annual contributions from the Anchorage Museum Association, the Anchorage Museum Foundation, the Municipality of Anchorage and private, corporate, and foundation funds.

Education programs are made possible, in part, thanks to funding from the Anchorage Museum Foundation through the Larry and Wilma Carr Education Fund, the Emi Chance Memorial Fund, and the William Randolph Hearst Education Fund. Additional support provided by Alaska McDonald's, Alaska State Council on the Arts, Alyeska Pipeline Service Company, BP, CIRI, ConocoPhillips Alaska, Habitat Housewares, Municipal Light and Power, National Endowment for the Arts, and Catherine B. Reynolds Foundation.

IMAGE CREDITS

Cover: Pat Austin, *Easter Tableau*, oil; Athabascan mask, National Museum of Natural History; all other images Chris Arend Photography or istockphoto.com

p. 3: (clockwise from top) Girl, Chris Arend; Preston Singletary, Ed Archie and Noise Cat, *Frog Mask*, glass, 1999, collection of Raven and Robert Fox; teacher, Chris Arend; teen, istockphoto.com; mammoth skull, © www.paleoart.com; Lucy Bend of Nome hanging fish, 1949, Steve McCutcheon; boy, Chris Arend

Back page: Girl and crab, Chris Arend; Preston Singletary, *Raven Steals the Sun*, glass, 2001, collection of Michael and Cathy Casteel

letter from the director of education

WELCOME BACK!

DURING THE LAST school year, educators like you gave the Anchorage Museum invaluable feedback. You explained what you needed to reinforce your work in the classroom. You told us about your challenges, your goals, and your hopes for the future.

Inspired by your suggestions and current best practices in the museum field, the museum's Education Department has improved and expanded its school programs.

Our exciting new offerings include assemblies at the museum, trip sheets to guide students through exhibits, and customizable planetarium options.

As we all know, students learn by doing. They remember what they have personally experienced. The museum can support your lesson plans in a way that's memorable for your students long after they've left your classroom.

There's no question Alaska's education community values the museum's school programs. In the 2010-11 school year, more than 13,500 students took advantage of our tours and other on-site school programs. Another 2,250 students, parents/caregivers, and community members enjoyed our afterschool outreach events.

In this catalog, we've provided all the information you need to select, plan, and register for museum school programs that will help you reach your goals. Please continue to communicate with us so we can make your museum field trip the best possible experience for you, your chaperones, and most of all, your students.

We look forward to seeing you at the Anchorage Museum!



Monica Garcia, M.Ed.
 DIRECTOR OF EDUCATION
 AND PUBLIC PROGRAMS

Assemblies come alive at the museum

FOR YEARS WE'VE been coming to your school and wowing assemblies full of students with our reptile collection and liquid nitrogen demonstrations. Now you can experience the excitement of an assembly at the museum with our new On-Site Assembly program.

"You get the thrill of the assembly while also getting a chance to explore the museum," said Monica Garcia, director of education and public programs.

In these assemblies, museum educators offer an extraordinary look at reptiles or conduct amazing demonstrations with liquid nitrogen. After the assembly, students break into smaller groups for free-choice exploration of the museum's galleries.

For more information about assemblies at the museum, see page 4. For more information about assemblies that take place at your school, see page 18.



table of contents



4 PROGRAM OPPORTUNITIES

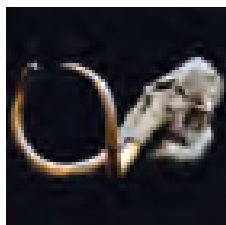
5 PROGRAMS AT A GLANCE

6 PROGRAMS K-2



8 PROGRAMS 3-5

10 PROGRAMS 6-8



11 PROGRAMS 9-12

12 EXHIBITIONS

14 SMITHSONIAN



15 PRESTON SINGLETARY

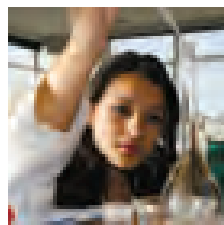
16 PLANETARIUM

18 SCIENCE OUTREACH



19 MUSEUM CONDUCT
HOMESCHOOL

20 JUST FOR TEACHERS



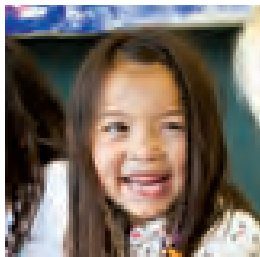
21 PLAN YOUR VISIT

22 REGISTRATION

OUR MISSION TO SHARE AND CONNECT ALASKA WITH THE WORLD THROUGH ART, HISTORY AND SCIENCE

STUDENT PROGRAM OPPORTUNITIES

NOW MORE THAN EVER, the museum is a multicultural and interdisciplinary field trip destination — sharing and connecting Alaska with the world through art, history, science and culture. Below, you'll find a list of school program options. Teachers can book one or two programs per visit. There's a lot to see and do at the museum, so remember less is more.



CHRIS AREND

DOCENT-LED TOURS

Docents guide students on an in-depth tour, sharing their expertise and knowledge of the museum's rich collection. 45 minutes. \$15 per group plus \$5 admission per student.

GUIDED INVESTIGATIONS

A museum educator uncovers mysteries in art, history, or science. Students explore in-depth topics using the museum's resources and collections. 45 minutes. \$100 per group plus \$5 admission per student.



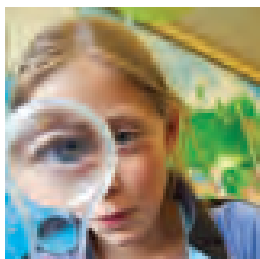
CHRIS AREND

FOCUSED STUDENT CLASSES

Classes are designed to introduce students to a variety of topics in art, history, or science using the museum's resources, collections, and exhibitions. This year's classes are linked to the *Mammoths and Mastodons: Titans of the Ice Age* exhibit and are only available Sept. 13 through Oct. 9. 90 minutes. \$125 per group plus \$8 admission per student, which includes premium exhibition fees.

ON-SITE ASSEMBLIES

Just like outreach assemblies, but held in the museum's auditorium. Museum educators give a science presentation on topics including liquid nitrogen and reptiles. 45 minutes. \$200 per assembly plus \$5 admission per student. 120-student maximum.



CHRIS AREND

PLANETARIUM

Planetarium Shows are educational films projected on a full-dome screen. Planetarium Guided Experiences are presentations led by a museum educator. Can't decide? Combine the two for the most thorough topic overview. Length varies. Prices vary from \$75 to \$125 plus \$5 admission per student.

REGISTRATION AND ADMISSION

School groups pay a fee per program as well as student admission. The education admission rate is \$5 per student. An additional \$3 admission fee applies to the premium exhibition *Mammoths and Mastodons: Titans of the Ice Age*. Admission is free for chaperones within the allotted ratio of one adult per five to eight students. Adults beyond this ratio must pay general admission and premium exhibition fees when applicable.

When registering for field trips, please remember the museum is closed Mondays from mid-September to mid-May. Student programs are available Tuesdays, Wednesdays, and Thursdays unless otherwise noted. Self-guided free exploration and some planetarium options are available on Fridays, as well.

All student programs align with the Alaska Content Standards and Alaska Cultural Standards for Students.

For detailed registration information, see page 22.

Programs at a glance

GRADE	PROGRAM	PAGE	SEMESTER (F=Fall, S=Spring)	LENGTH
K-2				
	Life in Alaska Docent-Led Tour	6	F, S	45 min
	Early Anchorage Docent-Led Tour	6	F, S	45 min
	Voyages of Discovery: Art of the North Docent-Led Tour	6	F, S	45 min
	The Mysteries of Mammoths and Mastodons Docent-Led Tour	6	F (Sept. 13 - Oct. 9)	45 min
	Written in Glass Docent-Led Tour	15	S (Feb. 14 - April 13)	45 min
	Tails and Scales Guided Investigation	7	F, S	45 min
	Life on the Edge Guided Investigation	7	F, S	45 min
	Ins and Outs of Digestion Guided Investigation	7	F, S	45 min
	Into the Wild Guided Investigation	7	F, S	45 min
	Cave Art Guided Investigation	7	F (Sept. 13 - Oct. 9)	45 min
	Planetarium Shows (Microcosm, Ice Worlds, Seven Wonders, New Horizons, Alaska: Spirit of the Wild, Earth, Moon & Sun)	16	F, S	16-41 min
	Planetarium Guided Experiences	17	F, S	45 min
	On-Site Assemblies	4	F, S	45 min
3-5				
	Alaska Native Cultures Docent-Led Tour	8	F, S	45 min
	Once Upon A Time Docent-Led Tour	8	F, S	45 min
	Voyages of Discovery: Art of the North Docent-Led Tour	8	F, S	45 min
	The Mysteries of Mammoths and Mastodons Docent-Led Tour	8	F (Sept. 13 - Oct. 9)	45 min
	Written in Glass Docent-Led Tour	15	S (Feb. 14 - April 13)	45 min
	Brain Scan Guided Investigation	9	F, S	45 min
	Cold Hard Facts Guided Investigation	9	F, S	45 min
	Rocks Rock Guided Investigation	9	F, S	45 min
	Into the Wild Guided Investigation	9	F, S	45 min
	Cave Art Guided Investigation	9	F (Sept. 13 - Oct. 9)	45 min
	Dig it! Focused Student Class	9	F (Sept. 13 - Oct. 9)	90 min
	Planetarium Shows (Microcosom, Ice Worlds, Seven Wonders, Wonders of the Universe, New Horizons, Alaska: Spirit of the Wild, Our Living Climate, The Lunar Story, Earth, Moon & Sun)	16	F, S	16-41 min
	Planetarium Guided Experiences	17	F, S	45 min
	On-Site Assemblies	4	F, S	45 min
6-8				
	Alaska History Docent-Led Tour	10	F, S	45 min
	Voyages of Discovery: Art of the North Docent-Led Tour	10	F, S	45 min
	The Mysteries of Mammoths and Mastodons Docent-Led Tour	10	F (Sept. 13 - Oct. 9)	45 min
	The First Peoples of Alaska Docent-Led Tour	14	S	45 min
	Written in Glass Docent-Led Tour	15	S (Feb. 14 - April 13)	45 min
	Eye to Eye Guided Investigation	10	F, S	45 min
	Ice Age Hunters Guided Investigation	10	F (Sept. 13 - Oct. 9)	45 min
	Mammoths and Mastodons: Adaptation and Environments Focused Student Class	11	F (Sept. 13 - Oct. 9)	90 min
	Following the Titans Focused Student Class	11	F (Sept. 13 - Oct. 9)	90 min
	Planetarium Shows (Ice Worlds, Seven Wonders, Wonders of the Universe, New Horizons, Alaska: Spirit of the Wild, Our Living Climate, The Lunar Story)	16	F, S	21-41 min
	Planetarium Guided Experiences	17	F, S	45 min
	On-Site Assemblies	4	F, S	45 min
9-12				
	Alaska History Docent-Led Tour	11	F, S	45 min
	Voyages of Discovery: Art of the North Docent-Led Tour	11	F, S	45 min
	The Mysteries of Mammoths and Mastodons Docent-Led Tour	11	F (Sept. 13 - Oct. 9)	45 min
	Written in Glass Docent-Led Tour	15	S (Feb. 14 - April 13)	45 min
	Planetarium Shows (Ice Worlds, Seven Wonders, Wonders of the Universe, New Horizons, Alaska: Spirit of the Wild, Our Living Climate, The Lunar Story)	16	F, S	21-41 min
	Planetarium Guided Experiences	17	F, S	45 min
	On-Site Assemblies	4	F, S	45 min

STUDENT PROGRAMS


GRADES K-2

Programs are available Fall 2011 (Sept. 13-Dec. 9) and Spring 2012 (Jan. 10-May 4) unless otherwise noted.


DOCENT-LED TOURS

Available Tuesdays, Wednesdays, and Thursdays at 10:30 a.m., 11:30 a.m., 12:30 p.m., or 1:30 p.m. 45 minutes.


LIFE IN ALASKA

 Students travel to the ancient past to learn how Alaska Native people built houses, made clothing, and hunted and gathered food without metal tools and electricity. This tour includes dress-up activities. Alaska History Gallery. History Standards: A. Science Standards: E, F.


EARLY ANCHORAGE

 Some of the most fascinating history is right under our noses. This tour focuses on the construction of the Alaska Railroad, early settlement of Anchorage, and Dena'ina Athabascan history. This tour includes hands-on activities with artifacts. Alaska History Gallery. History Standards: A, B. Geography Standards: F.

VOYAGES OF DISCOVERY: ART OF THE NORTH

 Alaska is seen through the eyes of artists who have drawn and painted here since the time of early European explorers. Students articulate their relationships with the North through discussion, writing, and drawing prompts. Art of the North Gallery. Arts Standards: A, B, C, D. Geography Standards: B.

THE MYSTERIES OF MAMMOTHS AND MASTODONS

 Available Sept.13-Oct. 9
Journey back millions of years and discover how mammoths and mastodons evolved. Explore their diverse habitats and debate extinction theories. Learn why scientists today are still fascinated with these amazing creatures. *Mammoths and Mastodons: Titans of the Ice Age* exhibit. History Standards: A, B, C. Science Standards: A, C, D, E, G. Arts Standards: D.



Chomper, the common snapping turtle

CHRIS AREND



JEAN PLASSARD

Grotte de Rouffignac

GUIDED INVESTIGATIONS

Available Tuesdays, Wednesdays, and Thursdays at 10:30 a.m. or noon. 45 minutes.

TAILS AND SCALES



Discover characteristics that make reptiles unique. Meet a ball python and other live critters. Learn how reptiles survive in their environments and what they eat. Marvel at the special traits they possess, such as alligators' extra eyelids. North Classroom. Science Standards: A, C.

LIFE ON THE EDGE



Students learn about sea stars and other Alaska marine creatures in the museum's touch tanks. Through hands-on exploration, children discover how the bodies of various marine invertebrates are well suited for diverse marine environments. North Classroom. Science Standards: A, C.

INS AND OUTS OF DIGESTION



Young learners make a group model of digestion, exploring the many mechanical and chemical processes that result in digestion. North Classroom. Science Standards: A, C.

INTO THE WILD



Students explore early 20th century Alaska through Sydney Laurence's 1929 painting *Mt. McKinley*. Students examine Laurence's artistic process and the painting's historical context through drawing and writing activities. Art of the North Gallery and South Classroom. Arts Standards: A, B, C, D. Language Arts Standards: A, B. History Standards: A, B, C.

CAVE ART



Available Sept. 13-Oct. 9

Working with clay, chalk, and charcoal, students learn the historical significance of cave art. Observation skills are sharpened through the powerful act of drawing. South Classroom and *Mammoths and Mastodons: Titans of the Ice Age* exhibit. Arts Standards: A, B, C, D. History Standards: A, B, C, D.



CHRIS AREND

Imaginarium Discovery Center



CHRIS AREND

Mammoths and Mastodons: Titans of the Ice Age


GRADES 3-5

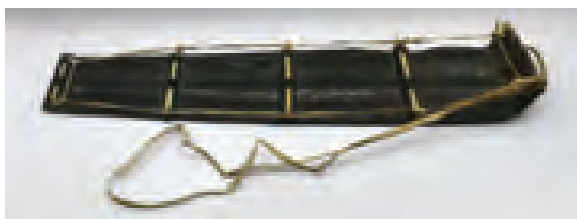
Programs are available Fall 2011 (Sept. 13-Dec. 9) and Spring 2012 (Jan. 10-May 4) unless otherwise noted.

DOCENT-LED TOURS

Available Tuesdays, Wednesdays, and Thursdays at 10:30 a.m., 11:30 a.m., 12:30 p.m., or 1:30 p.m. 45 minutes.

ALASKA NATIVE CULTURES

 Students learn about Alaska Native culture groups including Unangaġ, Athabascan, Iñupiat, Yup'ik, and Tlingit. Students explore traditional Alaska Native housing, culture, and lifestyle. Alaska History Gallery and Smithsonian Arctic Studies Center. History Standards: A, B. Science Standards: E, F. Geography Standards: B. Government and Citizenship Standards: C. Arts Standards: B, D. World Languages Standards: B.



Baleen sled, early 20th century

ONCE UPON A TIME IN ALASKA



In this theatrical adventure, students join two historic figures portrayed by museum docents. Children learn how Alaska Natives' lives changed after contact with Russian explorers and merchants. Students explore the history gallery, participate in the performance, and discover history's many voices. Alaska History Gallery. History Standards: A, B, D. Science Standards: E, F. Geography Standards: D, F.

VOYAGES OF DISCOVERY: ART OF THE NORTH



Alaska is seen through the eyes of artists who have drawn and painted here since the time of early European explorers. Students articulate their relationships with the North through discussion, writing, and drawing prompts. Art of the North Gallery. Arts Standards: A, B, C, D. Geography Standards: B.

THE MYSTERIES OF MAMMOTHS AND MASTODONS



Available Sept. 13-Oct. 9
Journey back millions of years and discover how mammoths and mastodons evolved. Explore their diverse habitats and debate extinction theories. Learn why scientists today are still fascinated with these amazing creatures. *Mammoths and Mastodons: Titans of the Ice Age* exhibit. History Standards: A, B, C. Science Standards: A, C, D, E, G. Arts Standards: D.

GUIDED INVESTIGATIONS

Available Tuesdays, Wednesdays, and Thursdays at 10:30 a.m. or noon. 45 minutes.

BRAIN SCAN



Children learn about the complexity of brain anatomy. They dissect sheep brains to better appreciate the role of dissection as a way of exploring human anatomy. Students discover the difference between sheep and human brains while learning how the brain controls the body's systems. North Classroom. Science Standards: A, C, G.

COLD HARD FACTS



Students examine the phases of matter through the unique properties of dry ice and liquid nitrogen. Students explore the strange properties of these cold materials through demonstrations and hands-on activities. North Classroom. Science Standards: A, B.

ROCKS ROCK



Using the rock cycle as a guide, students navigate the journey from formation to disintegration through the processes of weathering and erosion. Students gain an understanding of the various compositions of rocks and how they are affected by water, wind, and weather. North Classroom. Science Standards: A, D. Geography Standards: C.

INTO THE WILD



Students explore early 20th century Alaska through Sydney Laurence's 1929 painting *Mt. McKinley*. Students examine Laurence's artistic process and the painting's historical context through drawing and writing activities. Art of the North Gallery and South Classroom. Arts Standards: A, B, C, D. Language Arts Standards: A, B. History Standards: A, B, C.



CHRIS AREND



STEVE MCCUTCHEON

Blanket toss at Anchorage Fur Rendezvous, Feb. 22, 1952

CAVE ART



Available Sept. 13-Oct. 9

Working with clay, chalk, and charcoal, students learn the historical significance of cave art. Observation skills are sharpened through the powerful act of drawing. South Classroom and *Mammoths and Mastodons: Titans of the Ice Age* exhibit. Arts Standards: A, B, C, D. History Standards: A, B, C, D.

FOCUSED STUDENT CLASSES

Available Tuesdays, Wednesdays, and Thursdays at 10:30 a.m. 90 minutes.

DIG IT!



Available Sept. 13-Oct. 9

Students examine fossils to infer mammoth and mastodon traits and learn how these traits helped them survive in their environments. Children see teeth and bones from Pleistocene giants. Participants discover untold stories from the ancient past, which are revealed through fossilized mammoth and mastodon tusks. North Classroom and *Mammoths and Mastodons: Titans of the Ice Age* exhibit. Science Standards: A, C, D, E, G. History Standards: A, B, C.

Fred Machetanz, *Quest for Avuk*, 1973, oil on board

GRADES 6-8

Programs are available Fall 2011 (Sept. 13-Dec. 9) and Spring 2012 (Jan. 10-May 4) unless otherwise noted.

DOCENT-LED TOURS

Available Tuesdays, Wednesdays, and Thursdays at 10:30 a.m., 11:30 a.m., 12:30 p.m., or 1:30 p.m. 45 minutes

ALASKA HISTORY



This tour spans 10,000 years of Alaska history. Topics include Alaska Native cultures, Russian colonization, statehood, and the trans-Alaska oil pipeline. Students discover why different groups of people came to Alaska and how they shaped history. Alaska History Gallery. History Standards: A, B, C. Geography Standards: B, D, E, F. Government and Citizenship Standards: C. Arts Standards: B, D.

VOYAGES OF DISCOVERY: ART OF THE NORTH



Alaska is seen through the eyes of artists who have drawn and painted here since the time of early European explorers. Students articulate their relationships with the North through discussion, writing, and drawing prompts. Art of the North Gallery. Arts Standards: A, B, C, D. Geography Standards: B.

THE MYSTERIES OF MAMMOTHS AND MASTODONS



Available Sept. 13-Oct. 9

Journey back millions of years and discover how mammoths and mastodons evolved.

Explore their diverse habitats and debate extinction theories. Learn why scientists today are still fascinated with these amazing creatures. *Mammoths and Mastodons: Titans of the Ice Age* exhibit. History Standards: A, B, C. Science Standards: A, C, D, E, G. Arts Standards: D.

GUIDED INVESTIGATIONS

Available Tuesdays, Wednesdays, and Thursdays at 10:30 a.m. or noon. 45 minutes.

EYE TO EYE



Students explore the complex functions of the eye while observing the similarities and differences between cow and human eyes.

Students also work through the scientific processes of observation and dissection. North Classroom. Science Standards: A, C.

ICE AGE HUNTERS



Available Sept. 13-Oct. 9

Students design prehistoric tools, test their hunting skills, and discover what it took to survive during the Ice Age. Reynolds Room and *Mammoths and Mastodons: Titans of the Ice Age* exhibit. History Standards: A, B, C, D. Science Standards: A, E, F. Geography Standards: D, F.

FOCUSED STUDENT CLASSES

Available Tuesdays, Wednesdays, and Thursdays at 10:30 a.m. 90 minutes.

MAMMOTHS AND MASTODONS: ADAPTATION AND ENVIRONMENTS



Available Sept. 13-Oct. 9

Mammoths and mastodons evolved into several different species and inhabited diverse environments on four continents. Students examine how organisms change over time and how an animal's environment affects its physical appearance. Participants discover how isolation of mammoth populations led to further diversity and adaptation. North Classroom and *Mammoths and Mastodons: Titans of the Ice Age* exhibit. Science Standards: A, C, G. Geography Standards: F.

FOLLOWING THE TITANS



Available Sept. 13-Oct. 9

It's believed people followed mammoths from Siberia to North America. Working in teams, students learn how the natural world shaped civilization. Students investigate migration theories by examining data, creating a hypothesis and then testing it. Reynolds Classroom and *Mammoths and Mastodons: Titans of the Ice Age* exhibit. History Standards: A, B, C, D. Science Standards: A, C, E, F, G. Geography Standards: A, D, F.



Mastodon skeleton

JOHN WEINSTEIN © 2009 THE FIELD MUSEUM

GRADES 9-12

Programs are available Fall 2011 (Sept. 13-Dec. 9) and Spring 2012 (Jan. 10-May 4) unless otherwise noted.



Northwestern Railroad bridge at Copper River, c. 1900

DOCENT-LED TOURS

Available Tuesdays, Wednesdays, and Thursdays at 10:30 a.m., 11:30 a.m., 12:30 p.m., or 1:30 p.m. 45 minutes.

ALASKA HISTORY



This tour spans 10,000 years of Alaska history. Topics include Alaska Native cultures, Russian colonization, statehood, and the trans-Alaska oil pipeline. Students discover why different groups of people came to Alaska and how they shaped history. Alaska History Gallery. History Standards: A, B, C. Geography Standards: B, D, E, F. Government and Citizenship Standards: C. Arts Standards: B, D.

VOYAGES OF DISCOVERY: ART OF THE NORTH



Alaska is seen through the eyes of artists who have drawn and painted here since the time of early European explorers. Students articulate their relationships with the North through discussion, writing, and drawing prompts. Art of the North Gallery. Arts Standards: A, B, C, D. Geography Standards: B.

THE MYSTERIES OF MAMMOTHS AND MASTODONS



Available Sept. 13-Oct. 9

Journey back millions of years and discover how mammoths and mastodons evolved. Explore their diverse habitats and debate extinction theories. Learn why scientists today are still fascinated with these amazing creatures. *Mammoths and Mastodons: Titans of the Ice Age* exhibit. History Standards: A, B, C. Science Standards: A, C, D, E, G. Arts Standards: D.

EXHIBITIONS

PERMANENT EXHIBITIONS

ALASKA HISTORY GALLERY (K-12)



Here, visitors can take a journey through 10,000 years of Alaska history. Full-scale and miniature dioramas highlight early lifestyles of Alaska's Native peoples. Other gallery topics include Russian exploration and settlement, the gold rush era, World War II, statehood, and the trans-Alaska oil pipeline.

ART OF THE NORTH (K-12)



A showcase for the museum's permanent collection of art from Alaska and the circumpolar North. Offerings include large-scale landscape paintings, drawings from early European expeditions to Alaska, works by contemporary artists, and an entire gallery of paintings by Sydney Laurence, Alaska's best-known artist.

IMAGINARIUM DISCOVERY CENTER (PRE-K-12)



Hands-on science galleries allow visitors of all ages to explore earth, life, and physical science. This center houses the Thomas Planetarium and about 80 exhibits that put scientific concepts into an Alaska context. Visitors can use an infrared camera, touch a sea star, experiment with an earthquake shake table and more.

SMITHSONIAN ARCTIC STUDIES CENTER (3-12)

See page 14 for more information.



CHRIS AREND

Imaginarium Discovery Center

TEMPORARY EXHIBITIONS

SAILING FOR SALMON: 125 YEARS OF COMMERCIAL FISHING IN BRISTOL BAY



Through Oct. 2

This historical photography exhibition focuses on the history of Bristol Bay, one of the world's great fisheries. Government regulations prohibited fishing from motorized boats until the 1950s. Instead, fishermen used Bristol Bay double-ender sailboats. These boats were challenging to operate and largely obsolete after motorized boats became popular in the 1920s.

MAMMOTHS AND MASTODONS: TITANS OF THE ICE AGE



Through Oct. 9

For millions of years mammoths and mastodons roamed the Earth, great beasts weighing as much as 8 tons and bearing tusks up to 16 feet long. They were wonderfully successful creatures of the Ice Age who served as food and artistic inspiration for ancient people. This exhibition, developed by The Field Museum in Chicago, brings these animals to life through fossils, life-size replicas, and hands-on activities. Premium exhibition fees apply.

IGOR PASTERNAK SOLO EXHIBITION



Oct. 7 through Nov. 20

In this solo exhibition, Fairbanks artist Igor Pasternak debuts a new body of work including sculptures, installations, and film. Born in Ukraine, Pasternak sees his artistic process as ethnological research. He's known for conducting visual experiments in public places and encouraging viewer participation.

37TH ANNUAL WATERCOLOR SOCIETY JURIED EXHIBITION



Oct. 7 through Nov. 27

The 37th Annual Alaska Watercolor Society Juried Exhibition showcases the best work by Alaska's watercolor painters. This exhibition delivers a wide variety of styles and subjects, from representational to abstract and from traditional still lifes to contemporary portraits.

UNRAVELING THE HISTORY OF BASKETRY



Through Dec. 31

Last year, the museum invited scholars and Alaska Native basketmakers to study Haida, Tlingit, Tsimshian, and Yup'ik baskets. The resulting exhibition features baskets dating from the 1880s to the 2000s, highlighting the beauty and practicality of the objects.

ALL THAT GLITTERS: IMAGES FROM THE ALASKA GOLD RUSH



Nov. 25 through Feb. 19, 2012

When scores of fortune hunters stampeded north during Alaska's gold rushes, they viewed The Last Frontier as a place of potential wealth, great adventure, and a second chance. This exhibition uses historical photographs from the museum's archives to tell the stories of these optimistic prospectors.



Rebecca Lyon, *Women of the North* (detail), 2004, copper, glass, shell and paint

(RE)EMERGENCE: CONTEMPORARY NATIVE ART AND DESIGN FROM THE ANCHORAGE MUSEUM COLLECTION



Through March 4, 2012

This art exhibition celebrates what it means to be Native in Alaska today. It features nearly 50 art works created during the past five decades by prominent Alaska Native artists such as James Robert Schoppert, Alvin Amason, and Sonya Kelliher-Combs.

WONDERLAND OF TOYS



Nov. 24 through Jan. 8, 2012

The museum's atrium is transformed into a dazzling tableau of toys, some which date back as far as the 1800s. Against a backdrop of twinkling lights and holiday decor, find carousel horses, World War I toy soldiers, Oaxacan carved animals, and an evergreen tree decorated with more than 100 dolls in costumes from around the world.

EARTH, FIRE AND FIBRE XXVIII



Nov. 4 through Jan. 8, 2012

The Anchorage Museum's biennial craft exhibition is one of the state's longest running juried exhibitions. This popular exhibition showcases Alaska artists working with clay, glass, metal, wood, fiber, skin, bone, or stone. Selected artworks often challenge the usual preconceptions, blurring the lines between art and craft.

THE FIFTY STONE LITHOGRAPHS OF FRED MACHETANZ



Nov. 29 through February 25, 2012

Fred Machetanz (1908-2002) was one of the state's most popular artists, known for his paintings and prints depicting daily life in Alaska. He made 50 stone lithographs from 1936 to 1980, printing 100 of each design. This rare, complete set of lithographs includes beautiful renderings of Alaska Native people, whalers, trappers, prospectors, and wildlife.

ANCHORAGE SCHOOL DISTRICT ART SHOW



March 2, 2012 through April 1, 2012

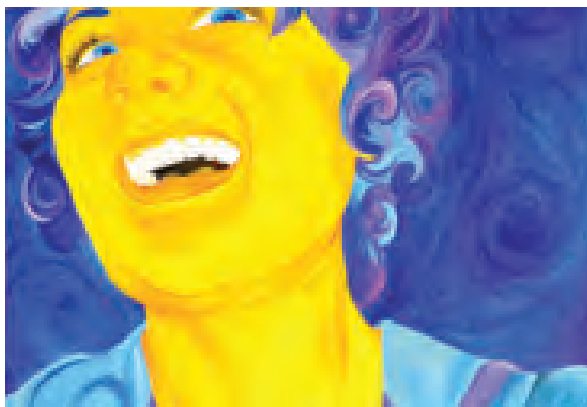
The 40th annual Anchorage School District exhibition showcases artwork by the district's most creative student artists. The exhibition gives kindergarten through high school students the rare opportunity to display their art in a museum. Works are chosen by teachers and include drawings, paintings, and sculpture.

TRUE NORTH



May 18, 2012 through Sept. 9, 2012

This exhibition departs from the poetic or utopian vision of the North. Artists from Alaska, Canada, and Scandinavia de-romanticize northern life, stripping off the varnish to reveal what's true. Through multimedia installations, sculpture, and photography, these artists explore our region's unique environmental, psychological, and societal challenges.



Unknown student artist, *Crystal*, acrylic

SMITHSONIAN ARCTIC STUDIES CENTER (3-12)

IN THE FIRST arrangement of its kind, the Smithsonian's National Museum of Natural History and National Museum of the American Indian loaned more than 600 Alaska Native artifacts to their place of origin. These cultural treasures are on display in the exhibition, *Living Our Cultures, Sharing Our Heritage: The First Peoples of Alaska*, at the Smithsonian Arctic Studies Center within the Anchorage Museum.


The artistry and design of Alaska's nine indigenous cultures fills floor-to-ceiling glass cases, allowing visitors to appreciate how each culture is unique and how their traditions are connected.

Objects from the past are placed into the context of people's lives today through contemporary images, video, and audio. Touch screens allow visitors to explore object information in depth.

This exhibition breathes the life of its people. It makes Smithsonian collections accessible to all, supports cross-cultural learning, and provides resources for the study and perpetuation of Alaska cultural heritage.

EVENING FOR EDUCATORS

SMITHSONIAN ARCTIC STUDIES CENTER

 5:30 to 8:30 p.m., Thursday, Oct. 27
Free, pre-registration required online

Tour the exhibition with Smithsonian anthropologist and curator Aron Crowell and assistant curator Dawn Biddison. Leave with a better understanding of Alaska Native culture, past and present. Learn about a new school tour and resources to help guide your next field trip. Enjoy light refreshments and door prizes.


RESOURCES

A virtual version of the exhibition is available online at <http://alaska.si.edu>. There you'll find many teacher resources, including an educator guide for the exhibition, worksheets for students, and pre- and post-visit activity suggestions. Exhibition catalogs are for sale in the museum shop.

DOCENT-LED TOURS

Tours are available Spring 2012 (Jan. 10-May 4) on Tuesdays, Wednesdays, and Thursdays at 10:30 a.m., 11:30 a.m., 12:30 p.m., or 1:30 p.m. 45 minutes.

THE FIRST PEOPLES OF ALASKA (6-8)

 Students are given an overview of Alaska's nine indigenous cultures. Students learn about different geographic regions of Alaska through 600 artifacts used in subsistence, celebrations and community. Exhibition films provide firsthand narratives from Alaska Native people about each culture. Smithsonian Arctic Studies Center. History Standards: A, B.



Smithsonian Arctic Studies Center

CHUCK CHOI



COURTESY OF THE ARTIST

Preston Singletary, *Breaching Killer Whale*, glass

PRESTON SINGLETARY: ECHOES, FIRE AND SHADOWS

FEB. 3, 2012 THROUGH APRIL 22, 2012

PRESTON SINGLETARY IS one of the nation's best-known Tlingit artists. For nearly two decades, he has melded the symbols and legends of his Tlingit heritage with the dynamism of glass to create a distinctive, powerful body of work. *Echoes, Fire and Shadows* features nearly 50 works of art, including the exhibition's signature piece, *Clan House*, a 16-by-10-foot glass triptych reminiscent of a Tlingit longhouse. The exhibition is enhanced with original music and a documentary film. Singletary has dedicated his work to both honoring Tlingit tradition and infusing it with new vitality.

EVENING FOR EDUCATORS

PRESTON SINGLETARY: ECHOES, FIRE AND SHADOWS



5:30 to 8:30 p.m.
Thursday, Feb. 9, 2012

Free, pre-registration required online

Join us for an evening exploring Preston Singletary's sculptural glass art. Walk away with an appreciation of the art and culture of the Tlingit peoples of Southeast Alaska. Takeaways include an educator guide and a multitude of field trip ideas. Enjoy light refreshments and door prizes.

DOCENT-LED TOURS

Available on Tuesdays, Wednesdays, and Thursdays at 10:30 a.m., 11:30 a.m., 12:30 p.m., or 1:30 p.m. 45 minutes.

WRITTEN IN GLASS (K-12)



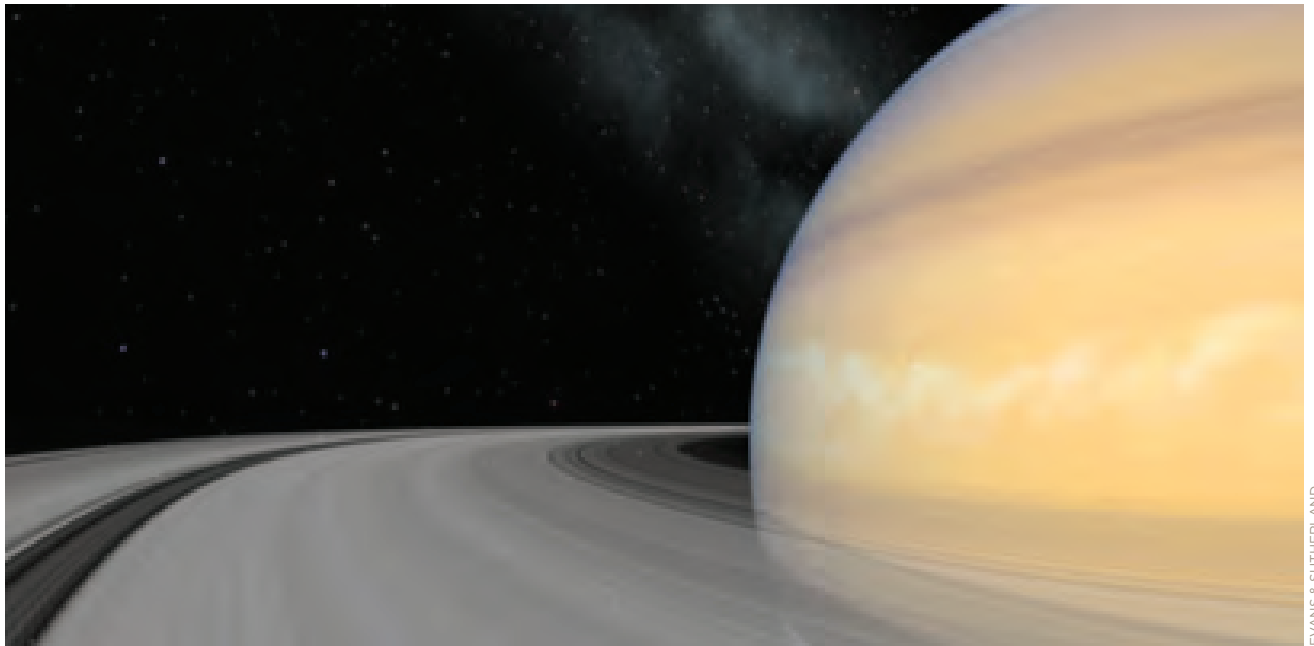
By studying Preston Singletary's glass sculptures, students gain insight into Tlingit culture, the evolution of Alaska Native art, and glass as an art form. This tour highlights the Alaska Native legends and traditional designs Singletary incorporates into his work. Students also learn about different glass sculpting techniques, including blowing, hot-sculpting, and sandcarving. West wing, third floor gallery. Arts Standards: B, D.



COURTESY OF THE ARTIST

Preston Singletary, *Eagle Transformation Mask*, glass with metal hinges

THOMAS PLANETARIUM



EVANS & SUTHERLAND

Ice Worlds

The Thomas Planetarium offers an exciting way to learn about astronomy and space. The 530-square-foot facility lets students journey to the stars, take trips through the solar system or join in presentations that explore the night sky. The planetarium seats 45 and includes handicap accessible seating. Planetarium programs are available Fall 2011 (Sept. 13-Dec. 9) and Spring 2012 (Jan. 10-May 4).

PLANETARIUM SHOWS



Planetarium Shows are educational films projected on a full-dome screen.

Available Tuesdays, Wednesdays,

Thursdays, and Fridays at 10:30 a.m. or 11:15 a.m.

MICROCOSM: THE ADVENTURE WITHIN (K-4)

At the center of nano medicine in the year 2053, viewers shrink down to the size of a microbe and get injected into a patient who is suffering from a mysterious virus. Also available in Spanish by request. 16 minutes. Science Standards: C.

ICE WORLDS (2-12)

Examine the ecosystems that thrive in the Arctic and Antarctic. See how ice shapes the landscape on other planets and moons in our solar system. 25 minutes. Science Standards: A, C, D, E. Geography Standards: E, F.

SEVEN WONDERS (2-12)

Turn back the pages of time to witness the ancient wonders of the world as they appeared thousands of years ago. Travel to Egypt to see the Great Pyramids, to Babylon to explore the fabled Hanging Gardens, and more. See some of the universe's greatest wonders. 32 minutes. Science Standards: D, E. History Standards: B. Geography Standards: B.

WONDERS OF THE UNIVERSE (3-12)

Peer deep into space through the eyes of the orbiting Hubble Space Telescope and travel back billions of years in time to witness the birth of the universe. Also available in Spanish, Italian, and Mandarin by request. 21 minutes.

Science Standards: D, E.

NEW HORIZONS (2-12)

Embark on a journey to the planets and moons of our solar system and travel down to the surface of all the planets. Also available in Spanish and Mandarin by request. 23 minutes. Science Standards: D, E, G.

ALASKA: SPIRIT OF THE WILD (K-12)

An Academy Award-nominated adventure into untamed Alaska: Glaciers calve, caribou stampede, and a wolf pack hunts in this half-dome show. Also available in Japanese and German by request. 41 minutes. Science Standards: C.

Geography Standards: A.

OUR LIVING CLIMATE (3-12)

Learn about the delicate balance required to support life by comparing Earth to its neighbors — the moon, and Venus. Discover how the Earth's climate is a complex system that changes over millennia. 28 minutes. Science Standards: A, C, D, E, G.

Geography Standards: E, F.

THE LUNAR STORY (3-12)

Learn the moon's story from its formation to its effect on Earth. Explore the relationship between the Earth, moon, and sun through an investigation of seasons, tides, eclipses, and orbital motion.

26 minutes. Science Standards: D.

Geography Standards: A, F.

EARTH, MOON, & SUN (Pre-K-5)

Coyote has a razor-sharp wit, but he's confused about what he sees in the sky. Join this character for a show that discusses American Indian star lore, lunar phases, eclipses, and space exploration.

26 minutes. Science Standards: D, E, F.

Geography Standards: A.

PLANETARIUM GUIDED EXPERIENCES

In each Guided Planetarium Experience, students learn about visible objects, constellations, and recent astronomy news. In addition, you may choose one of the following focus areas. Available Tuesdays, Wednesdays, and Thursdays at 10:30 a.m. or 11:15 a.m. 45 minutes.

STARLORE (K-12)

Take a closer look at stories that various cultures have told to explain astronomical phenomena.

Science Standards: D, E, F. Geography Standards: A.

History Standards: A.

MOTION OF EARTH (K-12)

Learn how the rotation and revolution of the planet affect us on Earth. Science Standards: D, E, G.

Geography Standards: A.



UNC MOREHEAD PLANETARIUM AND SCIENCE CENTER

Earth, Moon & Sun

SIZE AND SCALE OF THE SOLAR SYSTEM (3-12)

Gain an understanding of the size of our solar system, galaxy, and universe. Science Standards: D, G. Geography Standards: A.

CELESTIAL NAVIGATION (3-12)

Discover how different cultures throughout history have used the stars to navigate the Earth. Science Standards: D, E, G. Geography Standards: A. History Standards: A.

PLANETARIUM SHOWS PLUS GUIDED EXPERIENCES

Choose one planetarium show and one guided experience for the most thorough topic overview.



KEN GRAHAM PHOTOGRAPHY

Thomas Planetarium

SCIENCE OUTREACH

Anchorage Museum science educators bring the wonder of science to you. The Science Outreach Program provides educational science programming at off-site facilities such as schools and community centers. Opportunities include assemblies for large groups of students, science festivals during school science evenings, and StarLab portable planetarium shows.



CHRIS AREND

Savannah the ball python

ASSEMBLIES

Assemblies run 45-60 minutes and cost \$375. There is a 250-student maximum. Available assembly topics for the 2011-12 school year include:

ROCKIN' REPTILES (K-8)



Students get a guided introduction to the incredible animals living at the Anchorage Museum. Find out how snakes smell, if turtles hibernate, and more.

THE BIG CHILL (K-8)



Explore the states of matter as liquid nitrogen puts the freeze on household objects for truly chilling effects.

These assemblies are also available in the museum auditorium (learn more on page 2).

SCIENCE FESTIVALS (K-12)

Festivals run for up to two hours and cost \$375; additional hours are \$100 per hour, maximum six hours. Festivals include family-friendly exhibits and activities that foster parent and community involvement in science education. Topics covered include flight, the human body, optical illusions, magnetism, animals, and more.

STARLAB (K-8)

The museum brings the StarLab portable planetarium to an off-site facility with presentations on the night sky and constellations. Cost is \$250 for up to two hours (four presentations), \$75 for each additional hour. Maximum six hours in one day at one location. Shows run about 20 minutes. Maximum of 30 individuals per show.

Educators may also rent the StarLab without a museum educator. This type of rental is \$130 for the first day, \$65 for each additional day. Rentals include dome, fan, specified cylinders, and educational materials. Teachers must participate in a three-hour professional development session prior to operating the StarLab without a museum employee present.

Available projection topics for StarLab rental:

- Starfield
- Greek mythology
- Deep sky objects
- Native American mythology
- Chinese legends
- African mythology
- Earth
- Biological cell

REQUIRED STARLAB PROFESSIONAL DEVELOPMENT

Learn how to operate and use the StarLab in your classroom. Museum science educators take you through the inflatable dome's set-up and takedown processes. Discover the many possibilities for broadening the space science knowledge base of your students.

Available dates for StarLab professional development:

StarLab Fall Training for Educators

6 to 9 p.m. Thursday, Sept. 15

\$15 per person, pre-registration required online

StarLab Winter Training for Educators

6 to 9 p.m. Thursday, Jan. 19, 2012

\$15 per person, pre-registration required online



EVANS & SUTHERLAND

Ice Worlds

HOMESCHOOL OPPORTUNITIES

The museum offers a variety of opportunities for homeschool families. These programs are offered October through May. Visit www.anchoragemuseum.org/learn to see complete listings and download a registration form. Space is limited and pre-registration is required.

GUIDED INVESTIGATIONS

Guided Investigations offer interactive and exciting discovery in a traditional classroom environment. 45 minutes. Limited to 35 students. \$6 per student.

FAMILY LEARNING LABS

Family Learning Labs feature hands-on, science discovery for families. Limited to 44 participants, including parents. 90 minutes. \$12 per student, free for parents or guardians.

Parent/guardian participation is required for Family Learning Labs. During Guided Investigations, siblings not enrolled in the class are encouraged to explore the museum's exhibitions with adult supervision.

Fees are refundable if you cancel with at least 10 business days' notice. After that, fees are non-refundable. If unable to attend a session, please call (907) 929-9280 as soon as possible.



CHRIS AREND

MUSEUM CONDUCT

To make your experience as positive as possible, we ask that you, your students, and your chaperones follow some rules of conduct while your group is at the Anchorage Museum.

Just remember to LEARN:

- Listen: Follow all instructions provided by museum staff and refrain from side conversations or cell phone use during your visit.
- Engage: Actively participate in the learning experience and interact with the exhibitions.
- Attend: Keep track of assigned students and adhere to scheduled times for programs, lunch, and free-choice exploration. All students must be supervised at all times.
- Respect: Show respect for the museum's exhibits and staff and be a good model of behavior for students. Deal with behavioral issues.
- No-nos: Please remind students the museum doesn't allow running, yelling, or chewing gum. Food and drink are not allowed in galleries. Some objects are touchable, some are not: Please consult gallery signage.



Lyuba

CHRIS AREND

JUST FOR TEACHERS

RESOURCES

FOCUSED TRIP SHEETS

Download K-12 student activity sheets to help guide your field trip experience during free-choice exploration. These simple, adaptable trip sheets include activities for the gallery, as well as suggested pre- and post-visit activities for the classroom. Find downloadable Focused Trip Sheets at www.anchoragemuseum.org/learn.

ATWOOD RESOURCE CENTER

As the Anchorage Museum's library and archives, the Atwood Resource Center maintains a library of more than 12,000 titles with the primary focus on the history, ethnography, and art of Alaska and the circumpolar North. The archival collections, including more than 500,000 photographs, are also available for on-site research. Materials do not circulate, but teachers are welcome to reference the collection.

TRAVELING MUSEUM ARTIFACT KITS

With the museum's traveling artifact kits, students can touch historical objects while learning about Alaska's past. The artifact kits are free to all Alaska educators and are available for pick-up and drop-off at the museum's Education Department. Artifact kits can be shipped to schools outside the Anchorage area for the cost of shipping.

PROFESSIONAL DEVELOPMENT

TRAVELING KIT FALL TRAINING FOR EDUCATORS

6 to 9 p.m. Thursday, Sept. 22

\$15 per person, pre-registration required online

TRAVELING KIT WINTER TRAINING FOR EDUCATORS

6 to 9 p.m. Thursday, Feb. 23, 2012

\$15 per person, pre-registration required online

Learn how to use museum traveling kits. Explore hands-on activities, interpretive techniques, and customized lesson plans to create engaging, educational experiences for students.

ARTIFACT KIT OPTIONS

ANCIENT MYSTERIES (K-12)

This kit includes bone, stone, and wooden artifacts from St. Lawrence Island and spurs discussion about ancient Arctic technologies, subsistence, survival strategies, archaeology, and more.

BERING SEA AND BEYOND (K-12)

This kit contains natural samples and objects pertaining to Yup'ik and Iñupiat Native cultures. Students can touch seal and sea otter skin, try on snow goggles, and compare ivory and whale bone.

PEOPLE OF THE RAVEN (K-12)

This kit introduces Athabascan and Tlingit Native cultures with samples of natural materials, traditional tools, and beautifully crafted artifacts.

WORLD WAR II IN THE ALEUTIANS (7-12)

World War II had a significant impact on Alaska. Three distinct groups of people were brought together on the Aleutian Islands during this time: American military personnel, Japanese soldiers, and evacuated Unangaġ (Aleut) civilians. These educational kits explore personal stories from each group through interviews, documents, photographs, and objects. Kits contain lesson plans, maps, films and more. There are three WWII kits available:

AMERICAN STORY

Features American fighter pilots' accounts.

ALEUT STORY

Includes Aleut children's stories of evacuation.

JAPANESE STORY

Excerpts from Japanese soldiers' memoirs.

Learn more at travelingkits@anchoragemuseum.org or (907) 929-9270.

PROFESSIONAL DEVELOPMENT

CUSTOMIZED IN-SERVICE

Available Fall 2011 and Spring 2012

Schedule a customized educator in-service at the Anchorage Museum. Learn the ins-and-outs of field trip planning, how to bring exhibitions to life through hands-on exploration, and how to use the museum as an authentic extension of classroom curriculum. Begin to develop field trip activities. Price varies. For more information or to schedule an in-service call (907) 929-9271.

2011 EVENING FOR EDUCATORS

5:30 to 8:30 p.m. Thursday, Aug. 25

Free, pre-registration required online

Join us for an evening of learning about the museum's offerings and how you can use them in your lesson plans. Museum educators offer a preview of a Docent-Led Tour, Planetarium Show, and more. Walk away with field trip ideas and invaluable classroom resources. Enjoy light refreshments, door prizes, and a discount at the museum shop.



PLANNING YOUR FIELD TRIP

TRAINED MUSEUM EDUCATORS and docents are extremely effective, but you bring many essential assets to the museum learning experience, including knowledge of the curriculum and understanding of students' abilities and interests.

The Anchorage Museum's exhibitions tell many multicultural and interdisciplinary stories that can engage students in multiple ways. The role of teachers and chaperones is to facilitate student interaction with exhibitions. The best way to prepare for this is to visit the museum before your field trip (see page 23 for more details). Remember when planning a field trip to allow ample time for transition between programs, bathroom breaks, lunch, and free-choice exploration.

BEFORE YOUR FIELD TRIP

Pre-visit activities should familiarize students with what they will see and do at the museum. It's also important to discuss appropriate conduct and set expectations. We recommend pre-field trip activities such as reading relevant literature, doing Internet research, or conducting hands-on activities and labs.

AT THE MUSEUM

Choose from one of our educational programs for your field trip experience. In addition to those programs, we encourage leaving time for free-choice exploration. To the right, we've outlined some suggested field trip activities to help you develop or modify one of our Focused Trip Sheets for specific grade levels and exhibits. We suggest you provide chaperones with the Focused Trip Sheet and the answers. This empowers chaperones to fully participate and guide students' exploration.

BACK IN THE CLASSROOM

Provide opportunities for students to connect pre-visit lessons to post-visit concepts and classroom projects. Ask them to dig further into a subject by reading relevant literature, doing Internet research, or conducting experiments. Find specific post-visit activity ideas in the museum's downloadable Focused Trip Sheets.

SUGGESTED FIELD TRIP ACTIVITIES

- Sending students on scavenger hunts adds excitement, helps guide them through an exhibit, and encourages them to examine things more closely.
- Re-creating an object by sketching or drawing allows students to pause and make observations.
- Fact-finding and taking notes are useful ways for students to gather information from label copy, develop hypotheses, and document questions that arise.
- Categorizing objects in exhibitions is an easy way to help students group things and compare and contrast.
- Creating a hypothesis and testing it at the museum prompts students to think critically about real-world applications for classroom projects.
- Writing or journaling encourages students to reflect on the museum experience, find inspiration for future creative endeavors, and make connections between exhibitions and classroom lessons.

REGISTER YOUR SCHOOL GROUP

PRICES

GENERAL ADMISSION

School group general admission is \$5 per student. Additional admission charges for the premium exhibition *Mammoths and Mastodons: Titans of the Ice Age* are \$3 per student.

Chaperones are admitted free in a ratio of one adult per five to eight students; additional chaperones pay general admission rates plus premium exhibition fees when applicable.

Prices are subject to change. Payment is due upon arrival via cash, check, or credit card. If you are unable to pay with cash, check, or credit card, you must submit a purchase order prior to your visit and contact the museum's Education Operations Specialist for approval.

PROGRAM FEES

These prices are in addition to student admission.

- Docent-Led Tour, \$15 per group
- Guided Investigation, \$100 per group
- Focused Student Class, \$125 per group
- Planetarium Show, \$75 per group
- Planetarium Guided Experience, \$100 per group
- Planetarium Show and Guided Experience, \$125 per group
- On-Site Assembly, \$200 per group

REGISTRATION FOR FIELD TRIPS TO THE ANCHORAGE MUSEUM

Anchorage School District (ASD) teachers must contact ASD Community Resources at (907) 742-4148 to register for field trips to the Anchorage Museum. Non-ASD teachers must contact the museum's Education Operations Specialist at (907) 929-9280 to register for field trips to the Anchorage Museum.

Please have the following information ready when scheduling with ASD Community Resources or the Anchorage Museum's Education Operations Specialist:

- Requested field trip date (Tuesday-Friday only)
- Arrival time, time of program, and departure time
- Alternate date(s) and time(s)
- Program desired
- Alternate program(s) desired
- School name
- Teacher name
- Teacher phone number(s)
- Teacher email
- Grade level
- Number of students
- Number of chaperones
- Transportation method
- Lunch tables (if needed)
- Payment method

ANCHORAGE SCHOOL DISTRICT TEACHERS

Please plan early as field trips fill up quickly. It's recommended that educators schedule with ASD Community Resources at least three weeks before a desired field trip. The museum requires at least two weeks advance notice from ASD Community Resources. Pre-registration is required to receive the reduced educational admission rates. Groups that don't pre-register must pay general admission rates, and will not have access to school programs. To cancel or alter a field trip, please contact ASD Community Resources 10 business days prior to a field trip or a cancellation fee may apply. Scheduled field trips that aren't canceled at least two full business days prior will be charged 100 percent of the program fees. ASD and the museum will send confirmation emails to registered educators with important field trip details.

NON-ASD TEACHERS

The museum requires two weeks advance notice from non-ASD teachers to schedule a field trip. Pre-registration is mandatory to receive the reduced educational admission rates. Groups that don't pre-register must pay general admission rates, and will not have access to school programs. To cancel or alter a field trip, please contact the museum five business days prior to a field trip or a cancellation fee may apply. Scheduled field trips that aren't canceled at least two full business days prior will be charged 100 percent of the program fees. The museum will send a confirmation email to registered educators with important field trip details.

FIELD TRIP PREP

Teachers may contact the Education Operations Specialist to schedule a visit prior to the field trip date. This is by appointment only, and only teachers may attend. You will receive museum information and access to galleries included in the upcoming field trip experience. For more information contact (907) 929-9280 or fieldtrips@anchorage-museum.org.

LUNCH OPTIONS

In order for a field trip group to eat bag lunches at the museum, tables must be reserved in advance. Lunch tables are only available in the atrium at certain times and are on a first-come, first-served basis. No food or drink is allowed in galleries.

CHAPERONE POLICY

Students must be accompanied by one adult for every five to eight students: Specific ratios for each group are determined based on grade level, special needs, and school policy. Please note that adults in excess of the ratio must pay full general admission and any additional fees for premium exhibitions. Students must remain with their chaperones at all times while they are in the museum. Upon arrival, chaperones will be given a list of museum rules to enforce during the field trip. Failure to adequately supervise students may result in a group being asked to leave.

MEMBERSHIP

Membership benefits do not apply to field trips.

SIBLINGS

The museum requests that parent chaperones not bring siblings on field trips. If it is necessary, the parent must pay full admission for the sibling(s) and any additional fees for premium exhibitions. Siblings are not allowed to participate in field trip activities.

BUSES AND PARKING

If you are traveling by school bus, there is a bus drop-off zone on Seventh Avenue near the main entrance. If parents are driving students to the museum, street parking is available and there are seven pay lots/ramps within a two-block radius. Visit www.anchorage-museum.org for a detailed list of options. The museum does not validate or reimburse parking fees.

PHOTOGRAPHY

Cameras are permitted, but no flash photography, videography, or tripods are allowed. When taking pictures, please respect the barriers around the displays.

GALLERY CLOSURES

Occasionally, areas of the museum are temporarily unavailable due to exhibition installation. To confirm a specific gallery is available, call (907) 929-9201.

CONTACT

E-mail: fieldtrips@anchorage-museum.org

Phone: (907) 929-9280

Fax: (907) 929-9290



CHRIS AREND

Imaginarium Discovery Center

OUR MISSION

To share and connect Alaska with the world through art, history and science

HOURS

WINTER

Sept. 11-May 12

10 a.m. to 6 p.m.

Tuesday through Saturday

Noon to 6 p.m. Sunday

Closed Monday

FOLLOW US ON

facebook

twitter



STUDENT
PROGRAMS

p. 6



EXHIBITIONS

p. 12



REGISTRATION

p. 22

2011-12 EDUCATOR GUIDE www.anchoragemuseum.org

**ANCHORAGE
MUSEUM**

ANCHORAGE MUSEUM AT RASMUSON CENTER
625 C Street, Anchorage, AK 99501

