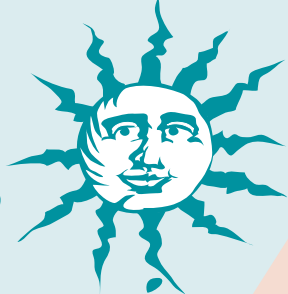


Anchorage Museum at Rasmuson Center

*Art
Potpourri
2009*



July 1 - July 31



**CRAFTS
WEEKEND**

AT THE MUSEUM

2 0 0 9

November 27, 28, 29

Anchorage Museum at Rasmuson Center

Crafts Weekend Entry Form # _____



**Deadline for
Entries:
March 27
6:00 pm**

Artist _____

Address _____

City _____

State _____ Zip _____

Day Phone _____

Email _____

MAIL ENTRY TO:

ANCHORAGE MUSEUM SHOP

Attn: Georgia Blue

121 West 7th Avenue

Anchorage, Alaska 99501

907-343-6195



FOR ANCHORAGE MUSEUM SHOP USE ONLY

Entry received _____ Entry picked up _____

Slides _____ CD _____ Entry mailed _____

Postage/Insurance _____

Detach here. Complete Entry Form and submit with entries.

This Fall, the Anchorage Museum will host Crafts Weekend 2009

CRAFTS WEEKEND NOVEMBER 27-29 is a juried crafts show open to artists who are residents of Alaska. The museum's atrium and selected spaces will provide the backdrop for approximately 40 artists' booths. This event is held in conjunction with the ReadAlaska Book Fair, which features Alaska authors, illustrators, small presses and independent publishers. Together these events have become a tradition in celebrating the arts in our community and mark the opening of the museum's holiday exhibit.

ACCEPTANCE in this event will be based upon quality of craftsmanship and our desire to provide an interesting variety of crafts. The Anchorage Museum offers the best setting in town with music, marketing and staff to support your needs. We will provide tables, skirting and chairs.

The Anchorage Museum Shop reserves the right to schedule artists and to assign their booth location.

ARTISTS interested in being considered will be required to be on-site during the event to sell their craft. A creative booth is expected from participants and a 25% fee will be taken on all sales, including commissions.

ENTRIES will be juried based on the submission of up to five quality slides or digital images that best represent the artist's current work. Each slide must be **CLEARLY LABELED WITH NAME AND MEDIUM OF WORK**. Digital images must be on PC-compatible CD in a jpeg format with maximum dimensions of 400 pixels on longest side, at 72 dpi. A price list and resumé (or artist's brochure) must be included with the entry form and images (slides or digital). All entrants will receive a letter of acceptance or nonacceptance by **APRIL 17**. The highest quality slides will be selected for use in promotional materials for this event.

DEADLINE for submission is 6:00 pm, **MARCH 27, 2009**.

ENTRIES to be returned by mail by **APRIL 17, 2009**. Mailed entries that do not include return postage will NOT be mailed back to the artist. Entries will be held for pick-up at the Anchorage Museum Shop until **APRIL 24**. The Anchorage Museum Shop will not be responsible for lost or damaged slides.

Detach here. Complete Entry Form on reverse side.



Crafts Weekend Entry Checklist

must include...

ARTIST/CRAFTSPERSON

- Completed Entry Form (on reverse side)
- Resumé, Artist Statement or Brochure
- 5 quality slides or 5 digital images on CD (pc-compatible jpegs)
- Price List
- Return Postage including insurance fees for entries to be returned by mail

For Further Information on:

Art Potpourri 2009
and/or

Crafts Weekend 2009

Contact Georgia Blue at the Anchorage Museum Shop

Phone: 907-343-6195

Email: bluegp@anchagemuseum.org



Art Potpourri Entry Checklist

must include...

ARTIST/CRAFTSPERSON

- Completed Entry Form (on reverse side)
- Resumé, Artist Statement or Brochure
- 5 quality slides or 5 digital images on CD (pc-compatible jpegs)
- Statement on demonstrating your craft
- Price List
- Return Postage including insurance fees for entries to be returned by mail

AUTHOR/ILLUSTRATOR

- Completed Entry Form (on reverse side)
- Copy of Book or Galley Proof
- Return Postage including insurance fees for entries to be returned by mail

Detach here. Complete Entry Form on reverse side.

This Summer, the Anchorage Museum will host

Art Potpourri 2009

The Art Potpourri event takes place in the Museum's Atrium July 1-31, 2009 and spotlights selected Alaska artists, craftspeople, authors, and illustrators. All participants will be displaying, demonstrating and selling their work to Museum visitors. We invite you submit your entry for this highly anticipated annual Museum event.

Deadline for entries submitted to the Anchorage Museum Shop is **FRIDAY, MARCH 27, 2009 at 6:00 pm**. No entries will be considered after this deadline and will be returned unopened. All mailed entries must include postage and insurance fees for return shipping. Once received, each entry becomes the responsibility of the Anchorage Museum and remains so until picked up by entrant or returned via mail through April 24, 2009.

The jury will select participants, based on the following criteria:

- * Quality of Work * Artistic Integrity * Interesting Demonstration of your Craft
- * Marketability and Price Levels.

Entries will be juried based on the submission of five quality slides or digital images that best represent the artist's current work. Each slide must be **CLEARLY LABELED WITH NAME AND MEDIUM OF WORK**. Digital images must be on PC-compatible CD in a jpeg format with maximum dimensions of 400 pixels on longest side, at 72 dpi. An emphasis on demonstrating your work will be important. Reproductions of original work will not be accepted. Large paintings do not lend themselves to this event.

Selections will occur by **APRIL 17, 2009** and letters of acceptance or non-acceptance will be sent to all applicants. The number of days an artist may participate in this event will be included in the acceptance letter. Artists may request specific days on a first-come, first-served basis. Only entries with paid return postage will be returned via mail by **APRIL 17**. All other entries may be picked up between **APRIL 17 AND 24**. For the event, artists will be expected to be at the Museum from 10:00 am to 6:00 pm. It is very important for artists to adhere to these event hours, in order to keep the event intact. All sales will be handled by the participating artist. The Anchorage Museum Shop will take a 25% commission on sales of arts and crafts. A 20% commission will be taken on sales of books.

- * ANCHORAGE MUSEUM SHOP PROVIDES: two tables, two chairs, table skirting.
- * EACH ARTIST NEEDS TO BRING: 3-part sales receipt books, sales transaction supplies, table top covering, extension cords, display extras, light fixtures as needed.

The Anchorage Museum Shop reserves the right to schedule artists and to assign their table location. An extensive display or booth is not recommended.

Detach here. Complete Entry Form and submit with entries.

Art Potpourri Entry Form # _____

**Deadline for Entries:
Friday, March 27
6:00 pm**

Artist _____

Address _____

City _____

State _____ Zip _____

Day Phone _____

Email _____

MAIL ENTRY TO:

ANCHORAGE MUSEUM SHOP



Attn: Georgia Blue
121 West 7th Avenue
Anchorage, Alaska 99501
907-343-6195



FOR ANCHORAGE MUSEUM SHOP USE ONLY

Entry received _____ Entry picked up _____

Slides _____ CD _____ Entry mailed _____

Postage/Insurance _____