



**Anchorage Museum**

AT RASMUSON CENTER

121 W. SEVENTH AVE. • ANCHORAGE, AK 99501  
907.343.4326 • WWW.ANCHORAGEMUSEUM.ORG

EXPLORE ALASKA'S HISTORY AND CULTURE

## Anchorage Museum expansion project strives to be first LEED-certified “green” building in Anchorage

The Anchorage Museum is pursuing Leadership in Energy and Environmental Design (LEED) certification for the 80,000-square-foot addition slated to open in Spring 2009. The LEED Green Building Rating System promotes a whole building approach to sustainability by recognizing performance in five key areas of human and environmental health: sustainable site development, water savings, energy efficiency, materials selection and indoor environmental quality.

“We understand that, if achieved, the museum expansion will be the first municipal building in Anchorage LEED-certified as a ‘green’ building,” said James Pepper Henry, Anchorage Museum director and CEO. “It is our hope that by securing LEED certification, the museum will be an example of sustainability for future public building projects and other museums throughout the state.”

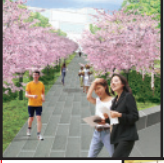
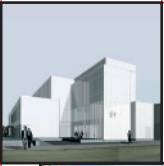
A grant from the Kresge Foundation’s Green Building Initiative allowed the museum to investigate sustainable building options early in the design process. A LEED checklist was used to track sustainable features incorporated during the design phases and revealed additional opportunities to conserve resources and maintain energy efficiency while creating a beautiful public building.

Environmentally friendly elements of the museum expansion:

- minimizes the building footprint by stacking the program on four levels plus a basement and maximizes the planted landscape and green space;
- uses recycled content building materials whenever possible;
- uses locally produced materials whenever possible, including concrete aggregate and landscape supplies;
- provides an air quality management plan during and after construction to flush out contaminants before occupancy;

— OVER —

museum



## Museum Seeks LEED Certification for Expansion (continued)

- allows staff to control their work area light levels, resulting in energy cost savings and higher productivity;
- offers increased energy performance resulting from extensive testing of the skin and HVAC systems;
- encourages use of alternative transportation, providing easy access by pedestrians and public transportation, convenient bike racks and a shower and changing room for staff;
- aims for a 20 percent reduction in water use through the use of low flow or automatic plumbing fixtures; and
- promotes recycling by providing local and central collection areas.

For more information, including a detailed list of the museum expansion's green features, visit [www.anchoragemuseum.org/expansion/building\\_green.aspx](http://www.anchoragemuseum.org/expansion/building_green.aspx).

Construction on the \$106 million expansion started in September 2006. The new building is expected to be complete in Spring 2009, opening levels 1, 3 and 4. Level 2, home to the Arctic Studies Center, is slated to open in Spring 2010, about the same time renovations of the existing museum are expected to be complete. For more information on the museum expansion, visit [www.anchoragemuseum.org/expansion](http://www.anchoragemuseum.org/expansion).